

craft CONTACTS

published four times annually by the Crafts Association of British Columbia
on-line info 24 hours a day - www.cabc.net

MAY / JUNE / JULY 2002

ISSN 0319 - 8873

**The Crafts Association of
British Columbia is a network
of craft professionals
dedicated to the development
of excellence in crafts.**

MEMBER PROFILE JANET CAMERON

by Bettina Matzkuhn

Janet Cameron's diminutive needle-paintings are engaging from across the room, but fascinating when viewed up close. She machine sews small (approximately 4" x 4") images on plain or painted canvases with layers of coloured threads, a confident drawing style and a painterly use of colour. She then treats the bordering canvases with modelling paste and paint to make a seamless frame. The central images stand out slightly from the frames which compliment or continue them in some way. Cameron's works display a gentle sense of humour: one chicken grooming its blissful companion, a beautiful woman holding a goofy bug-eyed dog, a pale person under a Paisley umbrella with the pelting rain sloshing over onto the frame. She has also played with taking canonical, familiar paintings and altering them - a wry re-assertion of textiles over painting. The sewing is done on electric



Janet & Valentine

using cardboard were featured in the engaging show of recycled materials "Hello Agan" at the Vancouver Museum in 1996. She has worked as a dental technician and says that making and matching teeth forced her to pay attention to fine detail and colour. She sells her work at *Nai Kai Gallery* on Saltspring Island, at *The Eclectic Collector* in Katonah, New York, at *Crafthouse*, and on the net at "www.cabnat.com." If I may coin a label, I think Cameron belongs to the "grateful realist" school of artists. She is a realist, as she does not take success for granted, neither in making the work nor in public acceptance of it. She knows the making is often a laborious, dicey process. Sometimes she will do 50 drawings before she has one she feels she can



Peak-A-Bod

initial anger, put the suggestions to work and thanks the Crafthouse staff. She thanks her father who told her "if you want to really do something, then don't wait". Cameron felt this was an essential, supportive push that gave her courage to pursue her creative work. She thanks the two older men who helped her learn set and mural painting while she volunteered over 6 years at a local theatre company in Surrey. They taught her what looks good on stage. While her current work is at the opposite end of the size spectrum, she has an appreciation for the mechanics and meaning of scale. She even thanks her former spouse, an architect, for sharing his drawing skills. After her marriage ended in the early 1990s, Cameron was diagnosed as having a bipolar disorder and was hospitalized. Allowed to go home during the day to do her sewing work, she returned for the evenings and nights. The staff at the hospital were supportive of her work and understood the central role it played in her life. She is grateful to them. If Cameron could see into another dimension, she would find Gabriele Munter and the anonymous Australian standing on their chairs cheering her on. They can tell she's no dabbler.

models Cameron has "modified" with a hacksaw. She cuts off parts of the housing to alleviate their tendency to burn-out and seize-up. She started using machine sewing creatively in 1991. "The machine had only one straight stitch and went forward and, on a good day, reverse", she notes. Around that time she saw a machine-sewn image done by an Australian man, with a colourful mix of threads. The image lives in her memory. It forefronted sewing as the subject itself and had an impressive materiality and immediacy. Everything she makes, she measures against her memory of that work. She is inspired by the colour sense of Gabriele Munter, an artist overshadowed by her famous boyfriend Kandinsky. These days, her companion brings home an endless stream of inspiration from the recycling depot. Essentially self-taught, Cameron also paints and makes sculpture. Her works



Detail from Kandinsky's "Street in Murau with Women"

2002 Gallery Exhibitions at a Glance

May 3 - June 3, 2002 "The Skin of this Planet" Martine Bowman. An exhibit of ceramics. Current explorations of texture impressed from both the natural world and the world of high technology on animated "two and a half" dimensional vessel forms and on wall tablets. Opening reception: Thursday, May 2, 2002, 6:00 - 8:00pm, Crafthouse.

June 7 - July 1, 2002 "Beyond Function" Peter Shaugnessy. A wood exhibit which combines abstract sculpture and functional boxes. Opening reception: Thursday, June 6, 2002, 6:00 - 8:00pm, Crafthouse.

July 5 - 29, 2002 "City of Gardens" Alice Phillips. A collection of felted wearable landscapes, consisting of large ceremonial kimonos, long kimono vests, short vests and accessories. Opening reception: Thursday, July 4, 2002, 6:00 - 8:00pm, Crafthouse.

August 1 - September 2, 2002 "20/05 Vision: Regional Reflections" BC fibre exhibit to coincide with Convergence 2002. Opening reception: Saturday, August 3, 2002, 6:00 - 8:00pm, Crafthouse.

September 6 - 30, 2002 "Knick Knack Paddywack" Nancy Walker. A ceramic exhibit of hand built clay pieces that explores no-nonsense nonsense. Opening reception: Thursday, September 5, 2002, 6:00 - 8:00pm, Crafthouse.

October 4 - November 4, 2002 "Much Depends on This Quilt" Daphne Harwood. An installation of quilts and artifacts looking at historical developments leading to the production of a quilt. Opening reception: Thursday, October 3, 2002, 6:00 - 8:00pm, Crafthouse.

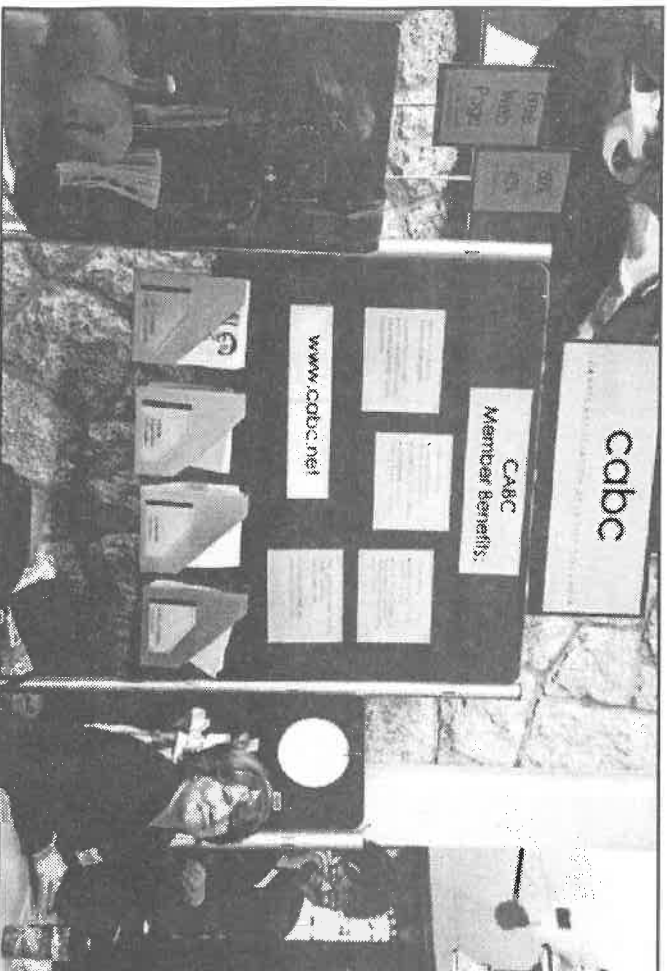
November 8 - December 2, 2002 "Out of the Blue" Michelle Mathias. A sculptural / mosaic exhibition exploring the theme of "sky". Opening reception: Thursday, November 7, 2002, 6:00 - 8:00pm, Crafthouse.

December 5, 2002 "Surprise Packages" An annual fundraiser for CABC. For further information, contact: Calvin Tapley, Communications Coordinator, 604-687-6511.

Contents

May / June / July 2002

Executive Director's Message	2
Convergence 2002 Vancouver	3
Long Term Thinking in a Uncertain Economy	4
Taking the Pulse of the Kootenay School of the Arts	5
Member Kudos	5
Crafthouse Report	6
Gallery Report	7
Craft Calendar	8



Nancy Ryder (left) and Jo Darts (right) at The Canadian Clay Symposium 2002.

Executive Director's Message

Annual General Meeting:

Welcome 2002-2004 Board of Directors
The Crafts Association of British Columbia's Annual Meeting was held on Monday, March 25, 2002 at the Granville Island Hotel. The meeting consisted of the usual presentation of reports, based on the Annual Report distributed with the last issue of *Craft Contacts*, and concluded with the acclamation of the state of nominees to the 2002-2004 Board of Directors. I would like to welcome Mary Lou Trinkwon and Sharon Slutsky, whose nomination was received just prior to the AGM, as our newest additions to the Board of Directors. Cindy Anderson, Jen Hiebert, and Nancy Ryder were elected for their 2nd terms, and Barbara Cohen, Judi Moscovitch, and Dawn Russell, who all joined the Board last summer, were elected for their 1st term. Please see the article by Jen Hiebert, our new President, for further introductions of the new Board of Directors.

As we welcome our new Board, and look forward to new ideas and renewed energies, it is important to pay tribute to our outgoing Board members: Anne Mauch and Earl Zimmer. Anne and Earl both came to the CABC Board 3 years ago as a result of an initiative to increase the number of craft supporters on the Board who had relevant professional expertise; Anne brought a tremendous knowledge of strategic planning and policy development to the CABC in her role as President, and Earl became our in-house legal advisor. I would like to take this opportunity to thank both Anne and Earl for their dedication to and support of CABC during their time on the Board, and I look forward to seeing them both at future events.

Long-Term Planning

Following the business portion of the meeting, those in attendance were introduced to the ideas that have been developed to date regarding our long-term planning and the vision of CABC for the future. It is important for any organization to have long-term plans (3 - 5 years) in place to help guide its growth and development. The current process began at a day-long Board retreat last fall, and has now grown to include feedback from CABC's committees, regional representatives, and the



Jane Matthews

members attending the AGM. The tremendous comments, suggestions and feedback received as a result of breaking out into two smaller groups will be sorted and organized for a more cohesive presentation to all members in the next issue of *Craft Contacts*. At that point, far from being a complete document, we will be asking all of you for your comments, suggestions and feedback to ensure that the entire CABC community has had the opportunity to speak about their vision for CABC. In the meantime, if anyone would like more information please don't hesitate to contact me.

Presentation

The evening finished off with a terrific presentation by Debbie Abma of Accent Consulting, entitled "My Piece is Finished - What's Next?" which addressed the how's and why's of selling your own work. Debbie went through the various stages of selling, from greeting and meeting customers, listening and learning to determine their motivation and influences for shopping/buying (or not), helping them to understand your work - technique and inspirations - and finally, how to send them off with reassurance about the work they've just purchased. A more detailed summary will be available from the CABC office, along with hard copies of the slide presentation, by the middle of May - if you'd like us to send you a copy, please contact me. The CABC deeply thanks Victoria Schifferns of Retail BC for co-sponsoring this event.

CABC Marketing Opportunities:

Canadian Clay Symposium
For this second annual event held at the Shadbolot Centre for the Arts in Burnaby in

We acknowledge the assistance of the Province of British Columbia, through the British Columbia Arts Council. We acknowledge the financial support of the Province of British Columbia through gaming revenue.



BRITISH
COLUMBIA
ARTS COUNCIL
Supported by the Province of British Columbia

Granville Island

HAWTHORNE CHARITABLE FOUNDATION



late March, an incredible day filled with demonstrations, slide shows and presentations by ten notable ceramists from North America and Britain, the CABC again took part with an information booth to market our programs and services to a new audience. Many, many thanks to Barbara Cohen and Silvia Dotto for creating a new and exciting booth for us, and to Nancy Ryder for joining me to promote the benefits of CABC!

Vandusen Gardens

The Crafts Association of BC was approached earlier this spring by the Vandusen Botanical Gardens to jury the Craft Zone for the 2002 Annual Flower & Garden Show to be held at the Gardens (Oak Street & 37th Avenue, Vancouver) in early June. In return, CABC has been offered one of the tables in this area as a means of promoting who we are and what we do to another segment of our local audience. At the time of writing, it has not been confirmed whether CABC will upgrade from the table to a booth space, but either way there will be a strong CABC presence at this year's show. Watch for us!

San Francisco International Gift Fair

Following upon the wholesale marketing initiative that saw the CABC attend the Toronto Gift Show in 1999 and 2000, presenting the work of 31 members to a new wholesale market, research into the US wholesale market has led the CABC to plan to attend the August 2002 San Francisco International Gift Fair (SFIGF). Our inaugural visit to this show was postponed from earlier this year due to the down-turn in the North American economy. The feedback from the February show however is that it was in fact better than show management thought it would be (both in terms of number of buyers and the number of orders placed). With the combination of a stronger economy and the knowledge that gift show buyer attendance in the summer months is usually higher, CABC feels confident that the August show will be a success!

Please see the call for entry on page 12 of this newsletter for more details. We are in the process of submitting two grant applications to support this wholesale/export initiative, and so do not have a final participation price confirmed - what is included in the call for entry is an educated estimate. Please contact either myself or Jo Darts if you have any questions about this initiative!

Canadian Crafts Federation:

The Canadian Crafts Federation/Federation canadienne des métiers d'art has officially launched their new website www.canadian-craftsfederation.com. I encourage you to check out the site - it has been beautifully designed and contains a lot of excellent information. The site is broken down into the following sections: inspiration - a slideshow of Canadian talent, and comments from craft curators; advocacy - read about the latest lobbying efforts; education - lists educational opportunities across Canada, bibliographies of craft resources and a glossary of craft terminology; connection - portal to the world of Canadian craft - link to provincial craft councils, international and single media craft organizations; information - who's who at the CCF/FCMA, provincial snapshots of current activities, and super database of events, grants, workshops, etc. across Canada.

Published by
Crafts Association
of British Columbia
1386 Cartwright St.
Granville Island
Vancouver, BC V6H 3R8
Tel: (604) 687-6511
Fax: (604) 687-6711
Toll free: 1-888-687-6511 (in BC)
Email: cabc@telus.net
Website: www.cabc.net

Board of Trustees

Cindy Anderson - Vice President
Barbara Cohen
Judith Fitzgerald - Treasurer
Jen Hiebert - President
Dawn Russell
Nancy Ryder
Sharon Slutsky
Mary Lou Trinkwon

Staff

Executive Director - Jane Matthews
Crafthouse Manager - Jo Darts
Communications Coordinator - Calvin Taplay
Part-time Help - Sandra Ramos & Aisuko Yoshimura

Regional Reps

Central Kootenay

Ian Johnston
703 Carbonate St.
Nelson, BC V1L 4P9
(250) 352-2293
jf-ruse@netida.com

Oceanside District

Les Crimp
Arrowsmith Pottery's Guild
600 Alberti Highway
Parksville, BC V9P 1J9
(250) 954-1872 / (250) 468-7072
fax: (250) 468-7062
lcrimp@island.net

Okanagan Boundary

Peter Flanagan
6030 Hwy. 97, PO Box 242
Peachland, BC V0H 1X0
Home: (250) 767-2540
Work: (250) 767-2010

Prince George

Cheryl Parker
2416 Weber Cr.
Prince George, BC V2N 3E3
(250) 564-5655
infemo@axion.net

Volunteers

Yoon Ahn
Anat Basanta
Sarah Chivers
Rachelle Ciminery
Barbara Cohen
Jia Ke Ding
Erin Dolman
Cynthia Dong
Emu Goto
Janet Helm
Jen Hiebert
Elsie Jang
Margaret Klajner
Megan Lee
Michelle Mathias
Bethina Matzkuhn
Judi Moscovitch
Vanessa Radlunz
Nancy Ryder
Joanne Salem
Ghazni Stokes
Suzanne Summersjill
Coralle Trance

Newsletter Design

Sandra Ramos

Opinions expressed in Craft Contacts are those of the authors, and do not necessarily represent those of the Crafts Association of British Columbia. Please send all comments and / or letters to the Editor, Calvin Taplay, calvin.taplay@cabc.net.

President's Message



Jen Hiebert

There are a lot of people who have a hand in shaping an organization. All of our members, staff, volunteers and Board of Directors have touched the CABC, and each has left their own distinct hand-print, no matter how small the contribution may seem. Fortunately for us, we have the privilege of working with people who don't think small. Throughout the organization, all these people have brought their intelligence, innovative ideas, and enthusiasm to everything they touch. And the CABC's community is stronger for it.



Cindy Anderson



Barbara Cohen

At this time of year, after an AGM, the CABC Board loses and gains directors, but those who are stepping down have left their own important mark with the organization, and they will continue to be part of the CABC community in other capacities. Judi Moscovitch also joined the Board last summer, and although was elected at the AGM, has in fact just resigned due to other time commitments. Judi will now bring her trusted expertise working with boards and committees to the Communications Committee. Earl Zimmer was on the Board for three years, and continues to sit on the Renovation Committee. His expertise has been a great asset, and is still only a phone-call away. Anne Mauch was president of the Board for three years, taking up the position as soon as she joined, and has brought a great deal of intelligence, strength and insight to her position. She initiated and



Judith Fitzgerald

● Sue Anderson ● Lorne Andrist ● Cheryl Anson ● Judith Arnold ● Lise Aylmer ● Camilla Ballance ● Helen Baltic ● Ursula Baerle ● Norma Carey ● Sharlene Christopherson ● Marvin Codods ● Pat de Cuto ● Melody Dillon ● Georgina Dingwell ● Cynthia Dong ● David & Annick Faehndrich ● Grahame Fowle ● Mofira Greaven ● Abe Hamm ● Patricia Hannah ● Beryl Hickinbottom ● Cheryl Jacobs ● Carmelle Jullon ● Miyuki Kamitsuma ● Mary Kersey ● Helen Kipp ● Ellen Kocher ● Chris Kovach ● Vivian Krause ● Elizabeth Kuzlowski ● Louis Lemieux ● Cindy Luchies ● Nancy Luis ● Sandy Lum ● Becky MacDonald ● Judi Macleod ● Chris MacMillen ● Mike McElgunn ● Susan McLennan ● Kevin Midgley ● Kristin Miller ● David Milligan ● Cynthia Minden ● Corinne Norbraten ● Shauna Noyes ● Yoriko Oki ● Kevin Paetkau ● Sharon Perkins ● Ross Pilgrim ● Deborah Pinsky ● Judi Ramsden ● Katherine Ratcliff ● Louayne Rhode ● Brenda Ripple ● Hans Rodseth ● Kristin Rohr ● Heather Rupert ● Marika Sacks ● Stewart Scott ● Christine Seigneuret ● Linda Shires ● Melanie Sigel ● Isabella Siu ● Rie Suzuki ● Jo Swallow ● Lorraine Thomas ● Mary Lou Trinkwon ● Natalie Wilson ● Kim Youn Hee ● Bonnie Zevick

created the member survey last year and was instrumental in so many other CABC ventures. We would like to thank these people for their hard work and dedication.



Dawn Russell

We have four new directors elected to the Board this year: Barbara Cohen, Dawn Russell, Sharon Slutsky, and Mary Lou Trinkwon. Barbara and Dawn joined the Board last summer after a Board recruitment



Nancy Ryder

expertise with not-for-profit organizations to the Board. She is instrumental on the Fund Development Committee. Sharon's experience in finance and her lifelong love of craft combine with her interest in the CABC and its Board. As an instructor in Capilano College's Textiles Arts Program and textile artist, Mary Lou looks forward to new educational initiatives within the CABC. Continuing on the Board this year are Cindy Anderson, Judith



Sharon Slutsky



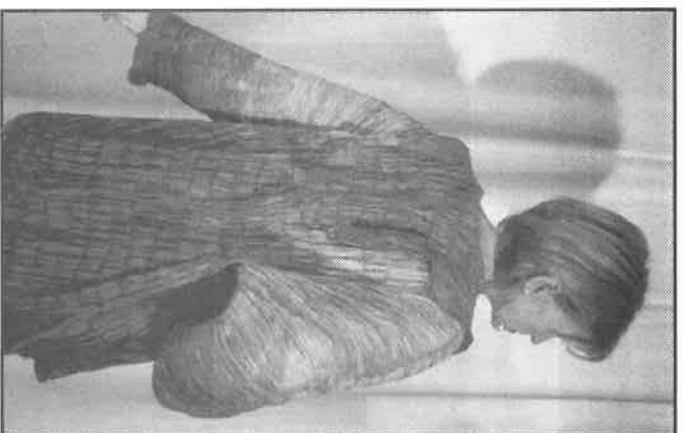
Mary Lou Trinkwon

Shop and Renovation Committees. Nancy is also starting her second term on the CABC Board of Directors. She sits on the Shop and Fund Development Committees. I am honoured to start my second term on the Board as the new President. I will continue on the Gallery and Renovation Committees.

We are very fortunate to have such a diverse and widely skilled team of individuals on the Board of Directors. We have a lot planned for this year, and look forward to working together for the whole CABC community.

CABC thanks the following members for their continuing support:

● Artisan's Courtyard ● Kootenay School of the Arts ● Chris Allan ● Cindy Anderson ● Virginia Baldwin ● Kate Barber ● Anat Basanta ● Sheila Beech ● Suzy Birstein ● Shirley Bride ● Joe Bye ● Susan Cairns ● Janet Cameron ● Rachelle Chinnery ● Anna Clark ● Joanne Copp ● Mary Culbert ● Colin Delory ● J. Demol Candleworks ● Paul Gray Diamond ● Nina Dudka ● Joan Duquette ● Judi Dydelle ● Helen Edwards ● Jennifer Fedorink ● Mary Fox ● Ramona Froehle-Schacht ● Laura Fry ● Elaine Futernan ● Izabela Gereb ● Jan Giffen ● Sean Goddard ● Paul Gravett ● Jeff Greenup ● Trevor Guernsey ● Sandra Harcourt ● Jen Hiebert ● Jacqueline Hooker ● Jane Hynek ● Evelyn Johnson ● Ian Johnston ● Lynda Jones ● Peter Kiss ● Jean Kuwabara ● Ceci Lam ● Kiln Art Glass Studio ● Ione MacLennan ● Greg Metz ● Barbara Mrakuzic ● Gailan Ngan ● Richard Palmer ● Robert Parkes ● Gillian Paynter ● Jo Priestley ● Keith Rice-Jones ● Andrea Maria Roberts ● Nancy Ryder ● Sid Samphire ● Adele Samphire ● Janet Schwiager ● Lynda Vanu Scobie ● Peter Shaugnessy ● Debra Sloan ● Linda Spence ● Naoko Takenouchi ● Maggie Tchr ● Bryan Tyson ● Ann Uusoja ● Svea Vatch ● Eva-Maria Voelkner ● Helena Vyvadil ● Andrea Wanes ● Janet Wallace ● Angelika Werth ● Veronique Whitehead



Anne Marie Andristhak, Silk Stitched Short Jacket



Laura Fry, Handwoven Twill Nightshirt and Robe

Convergence 2002 Vancouver by Jo Anne Ryeburn

Convergence 2002 Vancouver will take place August 1-4, 2002. It is sponsored by the Handweavers Guild of America, Inc., and hosted by the Greater Vancouver Weavers' & Spinners' Guild. Preconference workshops will be held at UBC July 28-31, 2002. There are still openings in a wide variety of workshops. For more details and registration go to the registration information page on our Web site:

<http://www.weavspindye.org/convergence2002/registration/welcome.html>

Registrants will enjoy seminars on a wide range of subjects, including tapestry weaving, basketry, beading and more. A complete listing can be found on the



Diana Sanderson, Handwoven Silk & Stretch Wool Top, Shirt & Shawl

HGA/Convergence Web site: http://www.weavspindye.org/convergence2002/registration/seminars_sun.html

Our featured speakers, Karen Selk and Mary Fram are from British Columbia, while Louise Lemieux Bérube will come from Québec and Reiko Sudo from Japan. A spectacular fashion show featuring cutting edge garments and textiles is planned for Thursday, August 1st.

Day passes can be purchased for \$15.00CDN which will provide access to the Convergence 2002 Vendor Hall and the Convergence 2002 Exhibits August 1-4. Opening hours will be 12-5 Thursday, August 1, 9-5 Friday and Saturday, August 2-3 and 9-4 Sunday, August 4.

At the Vendor Hall, located in the Vancouver Convention and Exhibition Centre (VCEC), you will find dozens of vendors with a wide variety of merchandise, equipment, books, supplies and yarns. Throughout the Hall you will find ongoing demonstrations by the vendors themselves and by individuals demonstrating their craft of expertise. Back strap weaving, Kente cloth, rug hooking, circular shawl knitting and Kashmir shawl weaving techniques are just a few of the many you will see. Take a moment and drop by the Cusco to Kutich booth where numerous pieces of outstanding fibre work have been donated to raise funds which will help craftsmen in the Gujrat Province of India and in Cusco, Peru continue to produce traditional craft work. All proceeds will go directly to the two groups; this fundraiser is made possible by HGA and the Greater Vancouver Weavers' and Spinners' Guild.

While you are at VCEC you'll want to see the NUNO exhibit. Fabulous handcrafted lengths of fabrics from Japan will grace the exhibit hall during August 1-4 only. Many other injured Convergence exhibits will be on display at VCEC as well, including basketry, interfaith expressions, spinning and felt exhibits. The Fashion Show, "Making Waves~Breaking Waves", will become an exhibit from August 2-4. The work of master craftspeople will be shown within the exhibit area. Some of the work of HGA Certificate of Excellence recipients and the Guild of Canadian Weavers Master Weavers will be on display.

Within walking distance of VCEC you will find the Canadian Craft and Design Museum which will be housing the annual HGA Small Expressions exhibit and E-textiles, the exhibit of Jacquard weaving. Just around the corner in the Pandulum Gallery, you will find the Tsunami exhibit featuring handcrafted yardage from around the world.

Many, many galleries in the downtown and surrounding areas are mounting fibre-related Community Exhibits. You'll want to visit the Museum of Anthropology to see the wonderful exhibits that will be on display during Convergence. 'My Ancestors are Still Darning' is one exhibit that will reflect the spirit of our first nations people. The Vancouver Museum will be exhibiting 'The Eye of the Needle', intricate and colourful embroidered pieces produced by the women of North Western India. For a complete listing of all Community Exhibits in the Lower Mainland and Vancouver Island, visit the Community Exhibit Web page at: http://www.weavspindye.org/convergence2002/registration/comm_exhibits.html

Whether you decide to be a registrant or a visitor, we hope to see you at Convergence 2002 Vancouver!

LONGTERM THINKING IN AN UNCERTAIN ECONOMY -
FORMING PARTNERSHIPS WITH YOUR RETAIL SHOPS

by Jo Darts



Have you ever wondered why some non-profit craft shops seem to just keep going and going, while the life of the commercial craft shop seems limited? Even non-profits no longer seem immune as just today I heard of the closure of the gift shop at the Canadian Craft and Design Museum. In this time of shaky economies, thinking needs to be adjusted for the long-term in order to develop symbiotic relationships between craftspeople, and shops and galleries. We must all think of this relationship as a partnership and develop a thoroughly professional attitude towards marketing.

As craftspeople and artists have become more sophisticated in marketing, the proliferation of self-run studio and home craft sales have also flourished. The success of Studio Open Houses during the Holiday Season and at other times such as Easter and Mother's Day, and the craft fair contribute significantly to the craftsperson's income. I am not suggesting that this is a bad trend - on the contrary. Rather, read this article as food for thought and think long-term.

How do these marketing opportunities impact sales from retail shops selling the same work as yourself? As there are only so many dollars to go around within a geographic area, it would make sense to think that sales in retail outlets would surely drop. But this could in fact become a win-win situation. Often gift ideas need to be mulled over, and a customer may prefer not to make a purchase at the craft fair. You would be performing a service for your customers, yourself and the shops that you sell in, by having take-away literature (business cards or flyers from your retail shops) at your booth, informing your customers where your work can be found year round. If your work is featured in a magazine, don't just include your studio address but the names and addresses of all your shops as well. Just as you are planning your holiday marketing, so the retail shops are likely implementing their own marketing plans such as a "Customer Appreciation Evening". Have you been asked to supply your retail shop with current work for this event - or are you saving it all for your craft fair or studio sale? Will you take your unsold work to the shop after your events are over, or have you thought ahead and created fresh work for ALL your marketing venues? If you hold marketing events at your studio, how do you advertise them? "Studio Open House" suggests that you are inviting the public to your studio (you may also be targeting a select group such as your own customer mailing list) to meet you, view your work, and hopefully make purchases. Is this work selling at the same price as your retail shops? If the work is the same design and quality as your shops, it should sell at the same price. If you advertise your event as a "Sale" or "Open House and Sale", it infers that you will be giving a discount to your customers. This may be because you have seconds, old designs or leftovers from sets. It may also be that you are giving a customer appreciation discount of say 10%. There is nothing wrong with this. We are all attempting new methods of marketing to remain competitive in this economy.

GRACE CAMERON ROGERS SCHOLARSHIP 2002
Application

Deadline: May 31, 2002

This scholarship is awarded to a practicing and/or emerging craftsperson to attend a recognized school or course to upgrade technical or design skills, or to seek a stimulus for greater creativity and inspiration.

As the cost of craft-related education (tuition, materials, travel, accommodation, etc.) can be high, there is an ongoing need for financial assistance to craftspeople to help defray these costs. The principle of the Grace Cameron Rogers Fund is held in trust by the CABC, and the interest generated each year is awarded annually.

Eligibility

- Must be a CABC member in good standing (applicants may include cheque for membership with application - \$53.50 incl. gst)
- Must be a BC resident
- CABC Board Members and paid staff are not eligible. They will become eligible one year after the date of the resignation from CABC.
- Previous recipients must wait 3 years before reapplying to the Scholarship
- Maximum of 2 scholarships awarded per person

Application Requirements

- A cover letter including an outline of the proposed study and why it would be beneficial
- A short biography and resume/curriculum vitae
- A budget outlining projected expenses and revenue
- A maximum of 8 slides of your work, properly labeled (artist's name, title, medium, size, year, and dot to indicate viewing orientation); also include a separate slide list

However your base retail price at craft fairs and your studio should still be consistent with your retail shops. But never ever give people year-round discounts from your studio and never sell to the public at a price minus the shop commission because you misguidedly feel that this doesn't matter. This undercuts your retailer - and why would a customer ever go back to a shop when they can come directly to you for a cheaper price. The customer would now expect to come to you regularly for a cheap price. Often that person will brag to friends about their good luck. This in turn proliferates the attitude that shops overcharge for work and therefore discounts should be expected in shops too. Essentially this undermines your work in the long run. A discount should be viewed by the public as something extra special, and not as a right. While you may not have as high an overhead in your studio or at the craft show as your retail outlets, you must still remember to include your labour and overhead (which could include advertising, mail outs, booth fee, marketing and selling time etc.) during the studio sale or craft show.

So what is the lure of a customer coming to your studio to buy direct, instead of going to a shop? Why to meet you of course. You are the single most important aspect of your work. You are the "extra" that a customer connects with that sets apart your hand made work from a commercially manufactured gift. You are the soul of the work, and you can impart intriguing stories about that piece, that a shop may not be aware of. Meeting the creator is a value-added inducement. Your work place is also of great interest, as is your portfolio and the chance to discuss a commission face to face.

When you started selling your work you went through a formula to arrive at the price you wanted to be paid (wholesale price). This is the price at which a shop buys your work. You can give them a "suggested" retail price (generally double the wholesale), which works as a guideline for the shop owner and lets them know what your work sells for in other places. It is also a figure at which you know that your work will sell. However there may be circumstances under which the shop may mark up your work more than the customary 100%. Examples of these could be: a high-rent district, shipping costs from the craftsperson, complimentary gift-wrap or customer shipping is included in the retail price.

If you consign your work, the shop will ask for the selling price. Once again, you take your wholesale price and double it. You keep this retail price consistent no matter what commission the shop takes. In other words if shop "A" takes 40%, and shop "B" takes 35%, your retail price should stay the same. You will get paid more money from shop "B", but this is not something you should feel is unethical! A problem often arises if you start out by only consigning your work but later decide to wholesale. Let's say your wholesale price is \$10, and you consign to a shop that takes a 40% commission. You figure that to make your \$10 the shop should sell your work for \$16.67 (you would likely round this off to \$16.75). Now you decide to start wholesaling to another shop "C" within the same area. That shop will double your wholesale price and will attempt to sell the same item for a minimum of \$20. Today's consumer does shop around and will blame shop "C" for price gouging. Unless you agree to increase your price at the consignment shops, shop "C" will close its account with you. So you can see how important it is to think long term by nurturing your wholesale accounts.

I know that some craftspeople think there is a difference between supplying their wholesale versus consignment accounts. A wholesale order means cash within thirty days. At least one hopes...A consignment shop generally pays by the middle of the month following the sale. I have been told a few times that my request for new work has to wait because a wholesale order has priority. Is there a way that this can be turned into a win-win situation?

If you consign to a shop that is willing to give your phone number to customers, you should not remove your work in order to sell it privately at a lower price. Also if you receive a commission or order as a result of a referral, do remember to pay the commission to the shop. This can vary from 10% upwards. Rarely is it the same as it would be if the shop had sold the work directly. Either way, the policy should be stated at the time you start selling in the shop.

Professionalism isn't intuitive, it comes with education. I hope this article helps the learning process, and remember that long-term thinking prevents shooting yourself in the proverbial foot. Your feedback is certainly welcome and I hope you will e-mail me at crafthouse@cabc.net

This article was written by referencing many books in the CABC Resource Centre, talking to craftspeople and other craft shops.

Criteria for Judging Applications

- Thoughtful and clear explanation of why the applicant wishes to pursue their particular course of study.
- Realistic budget.
- Their work, as shown in submitted slides, shows potential for growth.
- Professional presentation

Evaluation

For the benefit of all CABC members, the recipient(s) is/are required to write an article for the CABC newsletter, Craft Contacts relating their experiences and artistic growth during their course of study. The article(s) must be written within 3 months of completing the course of study. At that time, depending on the proficiency of the recipient's work, they may also be invited to exhibit their work in the Crafthouse Gallery.

Submission

Submissions must be postmarked by May 31, 2002

Submit to: Crafts Association of British Columbia
Attn: Grace Cameron Rogers Scholarship Committee
1386 Cartwright Street
Vancouver, BC
V6H 3R8

In Honour of Jill McGoun

by **Betina Matzkuhn**

Many craftpeople in BC will remember Jill McGoun who worked at Circle Craft Co-operative for many years in the 1970's and 80's. Jill suffered a stroke last Christmas and another on April 12, 2002. At the time I write this, she has been taken off life support and is not expected to live beyond a few days. I would like to share some memories of her at this sad time.

Jill grew up in Malaysia and Australia. She worked as a nurse in England during WWII and later moved to Chicago with her husband Bob. They also lived for a number of years in Montreal before moving to West Vancouver. Recently, Jill moved to a property in Maple Ridge, next door to her son, Tim.

I met Jill in 1978 when I worked as a sales clerk at Circle Craft. She was the most devoted craft enthusiast, diligently recycling her paycheck into the Co-op and commissions for craftpeople. Her focus was not to play the consumerist I've-got-more-than-you game, but to support and celebrate people's work. She was sincerely interested in craftpeople's creative progress and conveyed a constant, contagious delight in work well done. Her house and wardrobe featured choice items from all craft media and she enjoyed craft on a daily basis.

Over the years I brought my growing children to visit her and she would prepare glorious lunches for us. I am

Member

erin **DOLMAN**

art **LIESTMAN**

Selected as 2002 Niche Award Winners are **Izabela Sauer** and **Erin Dolman**, of Vancouver, BC. Izabela is a NICHE award winner for a piece entitled "Manhattan", in the category of Fiber-Surface Design. Erin is a NICHE award winner for a piece entitled "Bird Shrine" in the category of Silver Jewelry. The NICHE Awards program began in 1990 to recognize the outstanding creative achievements of American craft artists who produce work for craft galleries and retail stores. Judging criteria are based on three main distinctions: technical excellence and creativity, both in surface design and form, market viability, and a distinct quality of unique and original thought. Winners of the NICHE Awards were announced at a ceremony during the Philadelphia Buyers Market of American Craft, February 17, 2002. Only 38 artists - out of approximately 100 finalists - were named as winner of the NICHE Award. The Awards are sponsored by NICHE magazine, the exclusive trade publication for North American retailers of American crafts. NICHE magazine is published by The Rosen Group, which also publishes American Style magazine, a consumer lifestyle magazine for collectors of American art. Applications for the 2003 NICHE Awards will be available April 15, 2002, with an entry deadline of September 1, 2002. For further information contact Jenn Lyons at 410-889-2933 x225, fax 410-889-1320, e-mail jljons@rosengrp.com or visit www.americancraft.com

Art Liestman was awarded a grant from the American Association of Woodturners in 2000. He wrote an article in the American Woodturner (Spring 2002, 50) which explains:

glad they had this experience of true elegance. Jill's good humour, wide interests and panache in being the chef, hostess and favorite aunt made us feel welcome and special. There was always an extra box of homemade cookies or marmalade to take home. My children still measure cooking success against Jill's: almost as good as Jill's is very high on the scale. She was inordinately fond of blue, and there is one shade, usually on a hydrangea petal that hovers between blue and purple, which we refer to as a Jill blue.

Jill was remarkably active, riding her bicycle or walking on a daily basis. I was always amazed at her energy especially the way she worked in her garden. She adored roses and, in the summer, brought fragrant bouquets in to work to complement a spendid vase. My garden features cuttings of plants she gave me.

Her mindfulness of the work that goes into craft was keen. I remember one morning at work when Jill seemed especially tired. She explained that she woke up in the middle of the night and began to worry that she hadn't turned off the coffee maker. She fretted that there might be a fire and people's work would be damaged and she would never forgive herself. So she drove from West Van, over the Second Narrows (the Lions' Gate was under repair) into downtown Vancouver, only to find that all was well. She drove home again only to repeat the commute a few hours later. I have a deep sense of personal loss, but also realize that the crafts community is losing one of their greatest fans.

Jill mourned her daughter and husband who passed away before her. She will leave behind her son and her five grandchildren. Everyone will miss her.

Kudos

lesley **RICHMOND**

"In the fall of 2000, I studied with Jacques Vesery in Damariscotta, ME, thanks to funding from an AAW Educational Opportunity Grant. My two days with Jacques were an incredible learning experience, providing me with lots of ideas to explore in more detail for years to come. Jacques is known for his small hollow vessels that are made in two pieces. The main body is made of straight-grained domestic wood, usually cherry. Its surface is carved, leaving little if any of the original turned surface, and then colored with acrylic inks and paints. This main body is then topped off with a separate "collar" or "neck piece" made of fancier wood (a burl or an exotic) chosen specifically to contrast with the main body. The collar is sanded and finished with a friction polish, retaining the natural wood look. The addition of the collar significantly enhances the overall appearance of these carved and colored vessels. A well-chosen collar can also add interest to other hollow vessels."

Lesley Richmond received an award recently from Fiberart International. In their correspondence to Lesley they wrote: "It is my great pleasure to inform you that your work, *Leaf Skeleton*, has been chosen by the Fiberart International 2001 jury as the recipient of the Marianne Kor Award for Distinguished International Entry. This award is generously supported be a trust fund set up by Jan Kor in memory of his late wife, Marianne Kor, and artist and beloved member of the Fiberarts Guild. The award has been established to support artists living outside the United States whose work distinguishes itself among the entries chosen for exhibition.

Taking the Pulse of the Kootenay School of the Arts by Sarah Chilvers

Kootenay School of the Arts is keeping its doors open, and taking a reduction in funding by the BC Liberal government in stride. The Ministry of Advanced Education eliminated 62% of the school's annual budget earlier this year, yet KSA is forging ahead with its bold four-year plan. In fact, the management is confident that KSA can become a prominent, self-sustaining private school.

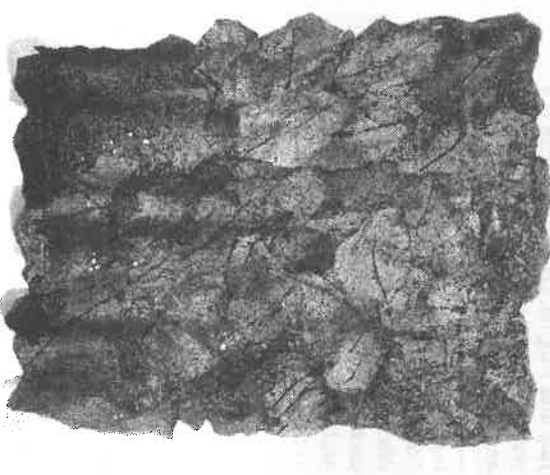
The plan calls for significant restructuring that includes decreases in program variety, number of students and facilities. The changes will result in the reduction of both faculty and administrative staff positions, and a decrease from 70 to 50 first year students for the 2002-2003 academic year. This decrease will in turn see the overall student body reduced to approximately 90 full time students.

"We are excited about the direction we are going", says Helen Sebelius, KSA's Executive Director. "Obviously, KSA has to change, but our vision is that the school will become stronger, more focused and streamlined as it works towards its goal to become a leader in Canadian Craft and Design education", explains Sebelius.

A review of the remaining five studios - Clay, Fibre, Jewellery and Small Object Design, Metal and Wood Products Design, and the core programming will ensure that the school's curriculum reflects its focus on the business and practice of craft and design. As a centre of craft and design, KSA is dedicated to graduating students who will be able to make a living through their professions.

A key part of the four-year plan is that the school will become self-sustaining. Fundraising initiatives and tuition increases will be implemented immediately. The fundraising plan includes both private and corporate sponsorship, and the establishment of an endowment through charitable contributions; contact friends@ksac.bc.ca for more information. The proposed increase in tuition fees will be in line with other schools in Canada offering programs of a similar caliber.

Writing a letter to the provincial government is something that individuals can do to show support for the school. Sample letters can be downloaded at www.kootenayarts.com. Previous operating funding came from the Ministry of Advanced Education, but the Ministry of Community, Aboriginal and Women's Services, which houses the BC Arts Council, could also be contacted regarding the importance of craft to the fabric of society.



Lesley Richmond, "Leaf Cloth", 1999

Your work has many admirers in the Guild and in Pittsburgh and we are pleased with the jurors' selection." Lesley went through a very vigorous jury process to get in to the exhibition initially. An earlier letter written to Lesley stated, "Your work, *Leaf Skeleton*, has been selected for exhibition. . . Jurors Ann Batchelder, John Garrett and Kenneth Trapp met . . . to evaluate over 1900 works of art by 769 artists from 35 countries. The competition was very fierce and only 82 pieces were chosen from the field. The submissions were of very high quality and reflected the diverse nature of contemporary fiber art. We are very excited about the resulting exhibition and are looking forward to seeing the actual work when it arrives in August [2001]"

Andrea Russell received a Canada Council grant and provided us with the following information: ". . . I am honoured and happy to be the recipient of a Canada Council grant/award to produce a project I have wanted to do for a long time. I have dabbled in it a bit, so some of you may have seen

andrea **RUSSELL**

izabela **SAUER**

prototypes exploring the idea . . . The description follows for those that are interested. . . ' The grant will be used in the research, design and creation of a series of wearable jewellery objects that integrate found materials. Each piece will be designed with a stand or a wall case so that it can be displayed when not worn. The work will be layered and intricate; sculptural stories on an intimate scale. The title of the series will be "Salvage". Conceptually, the series will look at the remains of our lives that have been broken, lost, or forgotten and then recovered and transformed: "salvaged". The collage of elements - precious metals, gems and found objects - is intended to make associations between diverse phenomena; the trivial and the profound, the concrete and the imagined, treasure and trash. Each piece will be an enigma, a visual poem that invites the viewer to explore and reflect on the significance of what we leave behind. ' I will be looking for an opportunity(s) to show the work after January 2003. . . "

If you have any information about other CABC member accomplishments in the next three months please send this information to Calvin Taplay, Communications Coordinator, CABC. He can be reached at 604-687-6511, fax 604-687-6711 or email calvin.taplay@cabcanet. This information will be included in the next edition of *Craft Contacts*.

Gallery Report

Communications Coordinator

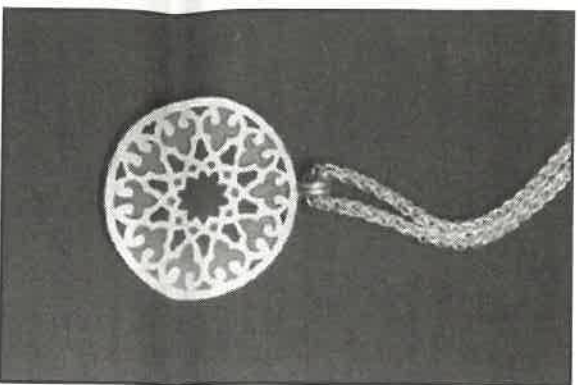
craftNoise

It was a very pleasant surprise to see the strength of our first quarter sales in Crafthouse. We may be experiencing a North American economic slow down, yet all sales have been higher than both last year and our budget. In fact February was our best since opening our doors in 1986. Our location on Granville Island, a tourist destination, has certainly aided this. A large number of our customers have been from the US Pacific Northwest and an increase has been seen in phone and electronic orders.

As part of our five year Strategic Plan, and to better serve the needs of CABC members selling in the shop, a part of the shop has been set aside to profile an individual's work on a monthly basis. Generally craft media will alternate, but will always tie in with the newsletter Member Profile as well as addressing any community events such as Convergence this August. The line-up for the next few months:

May (fibre) - Janet Cameron. June (wood) - Neno Catania. July (ceramics) - Gillian McMillan

Our April jeweller profile continues through May with Louise Jarvis. June will feature Andrea Waines' latest collection of letter-pressed jewellery. Her new styles of charm bracelets, pins, necklaces, and earrings combine inspirational and fun phrases with

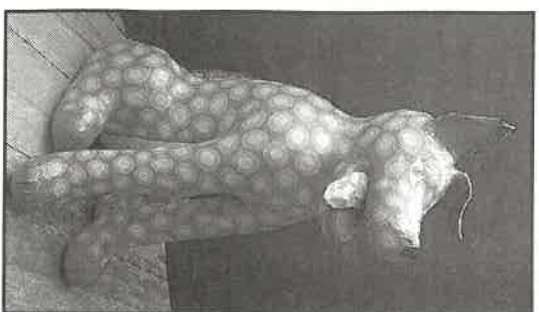


Karin Maria Jones, Pendant from the "Byzantium" Collection.

whimsical designs of purses, butterflies, shoes, cherries, crowns, and daisies. All of Andrea's jewellery is hand made with the artist stamping each letter one at a time. This attention to detail gives each piece its own unique characteristics, and the wearer their own personal talisman. Karin Maria Jones' work will be featured in July. Throughout history and around the world, some of the most finely crafted metalwork has been displayed on weapons (such as guns, swords and daggers) and armour. These works have been the inspiration for Karin's latest

jewellery series, called "Love is a Battlefield". With this new collection, she explores themes such as the paradoxes of beauty in ugliness, creation and destruction, and the pain of unrequited love.

At our February jury, work was accepted from three new craftspeople: Heather Rupert



Camilla Ballance, "Rex", Papermache

College. Heather combines hand dyed and block printed natural fabrics with commercial fabrics and appliques them to produce whimsical wall pieces under the name Thimbelina Textiles. We will see her children's clothes profiled in the shop in late July and August. Jane MacKenzie is a weaver who has studied in England, India and Montréal. She creates shawls and scarves, some using silk, and others using high twist rayon and linen which produce "collapse" fabrics. All fibres are hand-dyed, often with natural dyes such as madder, cochineal and indigo. Camilla Ballance is a multi-talented artist and a native of the UK. Crafthouse has one of her bold papier mache dogs. Camilla's forte is trompe l'oeil, having created a golf course in one client's basement, and a medieval tapestry in another's kitchen.

The shop will take a direction towards promoting more fibre in late July and early August as we welcome members of the Handweavers' Guild of America to Convergence 2002. The gallery will have a regional textile exhibition, the window will profile baskets from Donna Cochran, Joan Carrigan and Lorna Cammaert of Saltspring Island. Our member profile will be an exhibit of children's clothes by Heather Rupert, and



Jo Darts

Crafthouse:

- provides an outlet for the display and sale of traditional, contemporary, and leading edge fine craft.
- provides craft-related information and education to the CABC membership, general public, professionals in the visual arts community, and craftspeople.
- aims to be self-supporting in its promotion of craft.

Crafthouse is a non-profit gallery/shop and is a program of the Crafts association of British Columbia (CABC).

1386 Cartwright Street
Granville Island
Vancouver, BC V6H 3R8
tel: 687-2720 fax: 687-6711
crafthouse@cabc.net

HOURS:
Open Daily
10:30am - 5:30pm
Open on Statutory Holidays
10:30am - 5:30pm

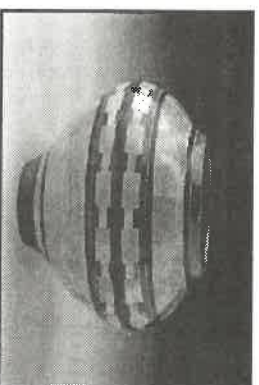
we will enlarge our wall space by removing the top shelf on our west wall, so that larger textile pieces may be displayed. The shop will be open until 9pm on Saturday August 3, as delegates come to Granville Island for an informal gala evening.

We welcome new volunteers Yoon Ahn, Jia Ke Ding and Megan Lee.

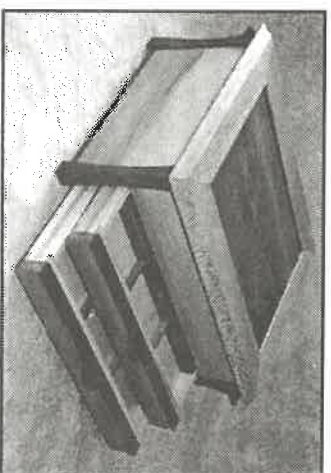
As a result of the April jury, we are happy to accept segmented Southwest Design bowls by Ross Pilgrim. Ross is a semi-retired accountant who started woodturning in earnest in 1998. He is an active member of the Greater Vancouver Woodturners' Guild. The image seen here won first place at the West Coast Woodturning Competition. John Wertle lives in Saskatchewan and makes wood boxes and chests. He is also a photographer and has had his work exhibited at the Whyte Museum of the Rockies. Judith Arnold's beaded amulet necklaces are inspired by travels through Asia, Europe and the American Southwest. Her interest in bead design is an evolution from extensive earlier work in weaving. Sandy Lum works in a mid range stoneware and focuses on pottery for food presentation. Her decoration utilizes stamping, wax resist and glaze trailing and her pieces are slab built. Natalie Normand makes round pewter boxes that resemble space ships. Her work begins with a master model from which she makes a rubber mold that is then injected with molten pewter using centrifugal force. Mike McElgunn uses raku firing to produce vessels that have been expanded from the interior to develop a variety of textures. Some have been altered and burnished, and all have glazed collars and interiors.

The date of the next shop jury is June 17. Work should be at Crafthouse June 11 to 15. All those wishing to submit work should be CABC members and should obtain a copy of the jury guidelines (available on our web page, by fax, phone or in person).

The shop will be open until 8pm on Friday May 10 for Mother's Day shopping, and from June to the end of August our hours will be daily 9am to 6pm



Ross Pilgrim, Southwest Design Bowl with 22 rings



John Wertle, Large Post Box. American Sycamore, Cherry, Mahogany

VOLUNTEER PROFILE: MARGARET KLAJNERT

by Jo Darts



Margaret Klajnert

In this issue we profile Margaret Klajnert who wins the award for longevity in volunteering. In her hometown of Warsaw, she obtained a Masters degree in Economics, and thereafter spent two years as assistant to Jolanta Owidzka, a tapestry weaver. In 1989 the decision was made to immigrate to Canada. Not content with simply registering in an ESL program to improve her language skills, instead Margaret decided to enroll in the Capilano College Textile Arts Program, so that she could both study textiles and English. This decision alone demonstrates her lateral and creative thinking!

While at Capilano College, she volunteered at the Canadian Craft Museum and had work in five exhibitions. By 1992 Margaret had obtained a Diploma in Textile Arts and shortly afterwards immersed herself in helping to bring an international tapestry exhibition to Vancouver. In 1992 she heard about the "Art and Architecture Symposium" being organised by the CABC. As her father-in-law was an architect she was quite familiar with collaboration between craftspeople and architects, and was keen to get involved. Margaret joined the CABC board in 1994 and not only helped implement the symposium, but also sat on the gallery and shop committees, eventually stepping down from the Board in 1997. She stepped down, but thankfully not away. She continues to sit on the shop committee offering her sage advice, her practical thinking and textile knowledge, which comes to the fore during our jurying.

She continues to be active within the fibre community, being a member of the BC Society of Tapestry Artists and currently helping with Convergence 2002, an important fibre symposium, coming to Vancouver in August this year. Besides her very active life within the craft community, Margaret describes herself as a decent cook, bad gardener and dog lover. And she's obviously very honest too!

When asked why she volunteers, Margaret replied "I like helping CABC. I find it rewarding and educational to be with enthusiastic, lively, creative people and to feel comradeship and the love and appreciation for fine crafts, that we all share."

Gallery Report

Communications Coordinator

Beyond Function

June 7 - July 1, 2002

Opening Reception: Thursday, June 6, 2002, 6 - 8pm

The Skin of this Planet

May 3 - June 3, 2002

Opening Reception: Thursday, May 2, 2002, 6 - 8pm



Calvin Taplay



Peter Shaughnessy

Enjoy a twist on box making in an exhibit by Peter Shaughnessy called "Beyond Function" at the Crafthouse Gallery. This exhibit takes place from June 7 - July 1, 2002. As Peter describes his work, "... to get out of 'dullsville,' I find myself making things that are usually thought of as functional (a box to put things in) and putting a twist on them - [I] make them quirky, unexpected, and even shocking." Peter resists producing wooden containers which are symmetrical. He also likes to give his boxes a sense of life. He indirectly personalizes environments through his containers. These objects at all times remain functional. To accomplish a sense of personalization, he often adds appendages to his boxes. These give a sense of movement and alter a uniform sense of balance. The appendages lead the eye around and through his pieces creating very strong gestural lines and forms to the finished compositions.

Peter's wooden containers are very intimate works. He likes to communicate stories to a viewer through the forms of his boxes. His narratives can often be very elaborate, making references to different parts of the body, movement, human relationships, and the use of mythical creatures and animals. Some of his containers look like transformations between animals and human beings. Other boxes have small drawers that explain a function and relates back to a larger story. Peter is highly imaginative. He is able to take a concept or story and explore that story to an incredible end through the execution of his works. His pieces are intriguing because we can appreciate the immense amount of care he has placed in executing his boxes. Simultaneously, we realize what extraordinary effort he has taken to express an idea in which we, as viewers, are drawn in deeper and deeper. We often find ourselves approaching his work as a puzzle, trying to put all of the pieces of the narrative together.

Peter's containers play on the boundaries between adulthood and childhood, by being both highly refined and intricate and also magical and playful. He uses diverse material such as pine, red cedar, horse hair, bamboo, wire, push pins, purple heart, and beads. Using these elements, he has produced works which push the boundaries of narrative in craft production. It is a joy to see how much care and attention Peter has given to his finished boxes and to realize how each of them are like gems. It will be interesting to see how Peter incorporates narrative elements in to his future works.

City Gardens

July 5 - 29, 2002

Opening Reception: Thursday, July 4, 2002, 6 - 8pm

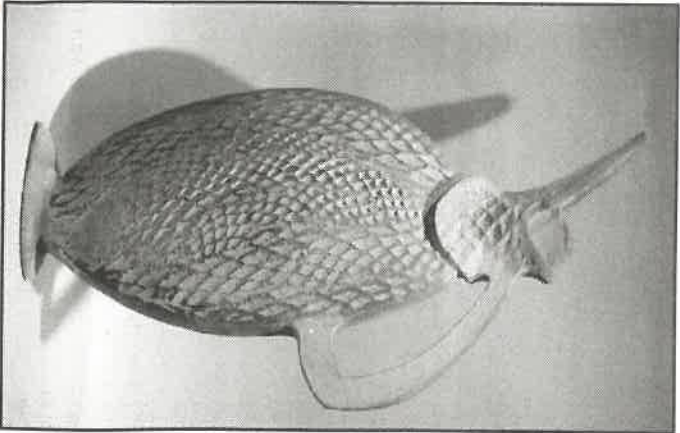


Alice Phillips

Embrace specially designed Kimonos and other articles inspired by nature in an exhibit entitled "City Gardens" by textile artist Alice Phillips. Alice describes her work in the following way, "... My clothing is always about wearing landscape - warmed and protected by a turf of soft hand-felted wool." Alice produces wearable art that deals with covering the body for protection from the elements while at the same time incorporating the environment in their design. Her kimonos are full and luscious and create a sense of warmth. Their structure is free flowing and gives a sense of the uncontrolled beauty of nature. There is a nice play between producing something which functions as an artistic object and maintains a constant grounding in nature.

There is a great sense of the wilderness in her forms as they seem to resist absolute structure and uniformity - her felting process helps to contribute to the organic quality of her kimonos. The kimonos are rugged with a great deal of presence. Her work involves synthesis by combining a traditional form like kimonos with very modernist or abstract

Her work abstracts elements within nature and represents them in a way that expresses emotional responses to the environment. There is a ceremonial element within Alice's kimonos and other wearable pieces. The way her felted works adorn the body gives them a commanding presence. They end up capturing the attention of everyone within a space because of their flamboyance. Additionally, there are many aspects within her designs which appear as if they are drawn from the elements in nature. For example, there are many references to fire, air, earth, and water. Because of Alice's tendency to incorporate repetition and pattern within her pieces it calls up the fluidity and flux of these elements.



Marlene Bowman, Ceramic Pitcher, Raku, 2001

technology. She gives old technology new life by using it as a texturing tool for ceramics. She creates a sense of rhythm across the surface of her work by using these computer fragments and imprinting on the clay surface with alternating pressure and depth of application. In some areas, this creates a sense of stylization. In other portions, it creates a sense of coarseness. Because of her exploration of different texturing techniques, peculiar form, and playing with spatial correlations, the show is a must see for anyone interested in comprehending how the medium of ceramics can be pushed. Her show is a great balance between the intellectualization of space and a tremendous sense of humor and life.

These vessels especially challenge the way that viewers would normally apprehend them. They encourage us to rethink the ways in which we use craft objects. There is a great sense of quirkiness and humor to her works in that if you look at the containers from the front they look similar to other vessels we have experienced. Once we proceed to turn her objects or adjust our position to view the works, we then realize that the objects are not "in the round." They are not like what we would see with standard ceramics or sculpture. They are more like paintings. Trompe l'oeil, a form explored by modernist painters and sculptors over several generations which creates the illusion of three dimensional space on two dimensional form is an inspiration for Marlene. There is a great deal of animation to the appearance of her oeuvre. A container creates a sense of movement and interaction with its surrounding compositions. Her craft not only challenges perspective but also equilibrium and balance.

Marlene's work enlivens and creates new exchanges by using the debris of computer technology. She gives old technology new life by using it as a texturing tool for ceramics. She creates a sense of rhythm across the surface of her work by using these computer fragments and imprinting on the clay surface with alternating pressure and depth of application. In some areas, this creates a sense of stylization. In other portions, it creates a sense of coarseness. Because of her exploration of different texturing techniques, peculiar form, and playing with spatial correlations, the show is a must see for anyone interested in comprehending how the medium of ceramics can be pushed. Her show is a great balance between the intellectualization of space and a tremendous sense of humor and life.



Alice Phillips, Felted Kimono, 2001

Display Ad Rates	(1-2 issues):	(2-3 issues):	(4 issues):
7 3/4" x 8 1/2"	\$195.00 + GST	\$167.75 + GST	\$156.00 + GST
5" x 6"	\$100.00 + GST	\$85.00 + GST	\$80.00 + GST
3 5/8" x 4 1/2"	\$55.00 + GST	\$46.75 + GST	\$44.00 + GST
2 1/2" x 3 1/2"	\$44.00 + GST	\$37.40 + GST	\$35.20 + GST

The rate for advertising in the Craft Calendar of Craft Contacts is \$25.00 for 40 words or less.

The rate for inserting flyers or pamphlets in the newsletter is \$100.00 - \$300.00 per issue.

The rate for placing a classified ad on CABC's website is \$25.00 for 40 words or less for 3 months.

Contact Calvin Taplay
for display ad rates & details.

Tel: 604-687-6511 Fax: 604-687-6711

Next Deadline: July 5, 2002

Events with grey backgrounds indicate CABC programs

Announcements

Calls for Entry

Deadline: Ongoing. The Summerland Art Gallery has opened a Gift Gallery and welcomes new work. Contact Barb Tucker at 250 494 4494.

Deadline: Ongoing. Third Annual Gibsons Landing Fibre Arts Festival is sending out a call for instructors to teach in August 2002. Come teach in our scenic seaside village, just a forty minute ferry ride from Vancouver. For further information send an email to info@gibbonslandingfibrearts.com

Deadline: May 1, 2002. CABC Goes to the San Francisco Gift Fair. See announcement on page 12.

Deadline: May 24, 2002. "Common Thread," a juried exhibition that celebrates both tradition and innovation in fibre, includes workshops, juried exhibitions and shows at various galleries throughout Oakville, ON. Entries will be juried by slides in June 2002. Info: Oakville Arts Council, Oakville, ON, 905 815 5977. Artsouncil@oplon.ca

Deadline: May 31, 2002. CABC is currently accepting proposals for exhibits in Craithouse Gallery for the year 2003. Works must be hand-made, high quality and in the following media: clay, glass, wood, metal, or fibre. For further information or an application, contact: Calvin Taplay 604-687-6511.

Deadline: June 5, 2002. Metal Arts Guild Exhibition: MAG members are invited to interpret the theme "turn up the volume," 3 submissions per entrant. Contact MAG Toronto, 416 532 0392.

Deadline: June 30, 2002. The Canadian Bookbinders and Book Artists Guild will be accepting entries for its third juried members' exhibit, "Art of the Book '03." Entry fee of \$20 for CBBAG members, \$65 for non-members. Send SASE (first class Canadian postage) to: Art of the Book '03, CBBAG, 176 St., Suite 309, Toronto, ON, Canada, M5T 1X5. 416 581 1071.

Deadline: Nov. 15, 2002. Saskatchewan Craft Gallery. Once a year the SCC Exhibitions Committee juries applications for exhibitions in the Saskatchewan Craft Gallery. For more information contact Saskatchewan Craft Council, 813 Broadway Ave., Saskatoon, SK S7N 1B5. 306 653 3616 or fax: 306 244 2711. saskcraftcouncil@shaw.ca; www.saskcraft-council.org

Exhibitions

Until June 2, 2002. Out Of This World: carpets and textiles from the spirit realm. At the Textile Museum of Canada until June 2, 2002. 55 Centre Ave., Toronto ON. 416 599 5321 www.textilemuseum.ca

February 6 to May 19, 2002. Jaquard Weaving. At the Textile Museum of Canada, 55 Centre Ave., Toronto ON. 416 599 5321 www.textilemuseum.ca

March 6 to June 30, 2002. E-textiles; at the Textile Museum of Canada, 55 Centre Ave., Toronto ON. 416 599 5321 www.textilemuseum.ca

April 6 - June 16, 2002. The Canadian Craft and Design Museum presents "Young Nordic Design: the generation x " located in the Main and Mezzanine galleries. A thought provoking survey of contemporary Scandinavian design, the exhibit features work by fifty young designers and design groups from all five Nordic countries: Denmark, Finland, Iceland, Norway, and Sweden. Contact the Museum at 604 687 8266. The Museum is located at 639 Hornby St. Vancouver BC.

May 1 - 31, 2002. "Chronicles of Pride," works by Patricia Richardson Logie, Simon Fraser University Gallery.

May 1 - 12, 2002. "Dummies" & "Boats & New York," work by Thomas Anfield, SC Arts Centre, Sechelt.

May 1 - 31, 2002. "Spring Fling Thing," Gibsons Landing Gallery.

May 2 - June 4, 2002. "Wood Marquetry," Elwood Amundson and Cary Newton. Traditions Handcraft Gallery 2714 13th Ave. Saskatoon SK (306) 569 0199

May 2 - 25, 2002. "20/05 Vision: A Regional Reflection," a juried fibre art show. Hosted by the Summerland Art Gallery, Summerland, BC. 250 494 4494. Email: slandarts@telus.net

May 3 - June 3, 2002. "The Skin of this Planet" Martene Bowman. An exhibit of ceramics. Current explorations of texture impressed from both the natural world and the world of high technology on animated "two and a half" dimensional vessel forms and on wall tablets. Opening reception: Thursday, May 2, 2002, 6:00 - 8:00pm, Craithouse.

May 6 - June 2, 2002. The Guild Shop presents: "A Turned Tale," an exhibition featuring some of Canada's best wood artists. 118 Cumberland St. Toronto, ON. 416 921 1721. Theguildshop@craft.on.ca, www.craft.on.ca

May 10 - July 21, 2002. "Enough On Our Plate & Put A Lid On It," Sask Terra Ceramic group shows. Saskatchewan Craft Gallery, 813 Broadway Ave., Saskatoon SK (306) 653 3616

May 15 - 31, 2002. Art Auction Preview Exhibition, SC Arts Centre, Sechelt.

May 21, 2002. Spin In, SC Spinners And Weavers, 10am - 3pm, Chaster House, Gibsons. 604 886 8696

May 21 - July 20, 2002. Junichi Arai will be exhibiting Textiles at the Canadian Craft and Design Museum, 639 Hornby St., Vancouver.

May 25, 2002. The Kent Harrison Foundation and the Harrison Festival Society present "Buds'N Bloom" Plant and Garden Show. For more information write to: Buds'N Bloom 2002, c/o Harrison Festival Society, Box 399 Harrison Hot Springs BC, V0M 1K0. Email: harrfest@universe.com. 604 796 3664, or fax 604 796 3694.

June 1, 2002. SC Arts Council Art Auction, SC Arts Centre, Sechelt.

June 6 - July 16, 2002. "The Mad Hatter's Tea Party," Annual Invitational Group Show, Traditions Handcraft Gallery, 2714 13th Ave. Saskatoon SK (306) 569 0199

June 7 - July 1, 2002. "Beyond Function" Peter Shaughnessy. A wood exhibit which combines abstract sculpture and functional boxes. Opening reception: Thursday, June 6, 2002, 6:00 - 8:00pm, Craithouse.

June 13 - July 7, 2002. The Guild Shop presents jewellery designer Van McKenzie's work in sterling silver and gold. The Shop is located at 118 Cumberland St., Yorkville ON. 416 921 1721. Email: theguildshop@craft.on.ca or visit online at www.craft.on.ca

June 18, 2002. Spin In, SC Spinners & Weavers, Chaster House, Gibsons.

June 21 - July 26, 2002. "Pangintung Graphics Collection 2002," Is presented by the Guild Shop, and features original interpretations of Arctic life, legends and traditions. 118 Cumberland St., Yorkville ON. 416 921 1721. Www.crafts.on.ca or email: theguildshop@crafts.on.ca

June 22 - 29, 2002. Folkfest Craft Fair is held at the Civic Plaza, 141 W. 14th St., North Vancouver. Contact Amanda Johnson for more information: 604 988 6844, Fax: 604 988 2787. Email: visions@telus.net.

June 29 - August 18, 2002. The Surrey Art Gallery is to present their Permanent Textiles Collection, including works by Barbara Todd, Ruth Scheuing, and Monica Napier. 13750 88th Ave. Surrey.

July 1, 2002. Canada Day festivities and craft fair, held at Waterfront Park, 245 W. Esplanade Ave. (just west of Lonsdale Quay), North Vancouver. For more information, contact Amanda Johnson at 604 988 6844, Fax: 604 988 2787, email: visions@telus.net.

July 4 - 31, 2002. "A Carnival of Containers," invited basketmakers will display their works at Circle Craft Gallery. 1 - 1666 Johnston St.

July 4 - August 10, 2002. "American Tapestry Biennial IV," presented by the American Tapestry Alliance, and hosted by the Richmond Art Gallery. 180-7700 Minoru Gate, Richmond.

July 5 - 29, 2002. "City of Gardens" Alice Phillips. A collection of felted wearable landscapes, consisting of large ceremonial kimonos, long kimono vests, short vests and accessories. Opening reception: Thursday, July 4, 2002, 6:00 - 8:00pm, Craithouse.

July 9 - August 6, 2002. "Finnish Artworks," by Anna Riita and Lisa Haavisto. At the Bel Art Gallery, 3053 Highland Blvd., North Vancouver.

July 9 - 31, 2002. Ceramics - Invitational Exhibition, SC Arts Centre, Sechelt.

July 9 - August 8, 2002. Textile Design in Sea to Sky," works by Jane Iverson, Fran Solar, Kate Barber and Micheline Bell. In the Foyer Gallery at the Squamish Library, 37907 Second Ave., Squamish.

July 11 - August 4, 2002. The Guild Shop presents three exhibitions: All That Glitters, led by renowned artist Mark Lewis, and including work from Canada's top glass artists; quilt designs from textile artist Joyce Seagram. Also displayed are the fine-metal talents of the Georgian College's Jewellery and Metals Programme Graduating Class. The Ontario Craft Council's Guild Shop is located at 116 Cumberland St., Yorkville ON. 416 921 1721. Visit online: www.craft.on.ca, or email: theguildshop@craft.on.ca

July 13 - August 4, 2002. "Tapestry and Felt," works by Ann Dumper, Joan Miller, Ellen Hamilton, and Marie Slessor. Buornaby Arts Council, 6584 Deer Lake Ave.

July 15 - August 15, 2002. "Fibre Art," an exhibition of the Greater Vancouver Weavers' and Spinners Guild, at the Vancouver Public Library, 350 W. Georgia St.

July 15 - September 6, 2002. "Deliberate Entanglements: Two Fibre Artists," works by Jo Morgan and Denise Snyder. At the Teck Gallery, located at SFU in Harbour Centre.

July 15 - August 10, 2002. "Tsunami- Yardage Exhibit," a Convergence Exhibition, at the Pendulum Gallery, 885 W. Georgia St.

July 15 - August 11, 2002. Juried show: "Coastlines and Passages Fibre Exhibit," will be hosted by the Bowen Island Arts Council Gallery at Artisan Square, Bowen Island.

July 17 - September 1, 2002. "Come Rain or Come Shine," works by the Vancouver Guild of Fibre Arts. At the Seymour Art Gallery, 4360 Gallant Ave.

July 20 - August 10, 2002. "Land and Light," an exhibition of woven landscapes by Jane A. Evans. Show is held at The TextileContext Studio, Granville Is. 1420 Old Bridge St. Vancouver BC.

July 21 - August 5, 2002. "If Images Speak A Thousand Words.....?"

An image based textile exhibition juried by Dorothy Caldwell and Ruth Scheuing. Held at the Roundhouse Community Centre, in conjunction with Convergence 2002.

July 21 - August 5, 2002. "Interwoven Communities: Small Format Tapestries," a Convergence Exhibit, at the Roundhouse Community Centre, 181 Roundhouse Mews.

July 22 - August 11, 2002. Blackberry Gallery presents "Wired - Woven," works by Lilly Marsh. Located at 2425 St. John's St., Port Moody.

July 22 - August 31, 2002. The Tzoulaem Weavers and Spinners Guild will have a Fibre Exhibition at Imagine That-Artisans' Designs. Located at 251 Craig St., Duncan.

July 24 - August 21, 2002. "Quilts, Felts, Textiles," a Collection of works from artists Daphne Harwood, Alice Phillips, and Fran Solar. At the Wood Works Gallery, 740 Denman St.

July 24 - August 7, 2002. "Ephemeral Forest," works by Wendy Weiss and Jay Kreimer, will be exhibited in the Asian Centre Auditorium. West Mall, UBC.

July 24 - August 7, 2002. Kim Ji-Hee will be exhibiting paper artworks in the lower gallery of the Asian Centre. West Mall, UBC.

July 24 - August 12, 2002. The garden themed Chinese Consulate Collection will be exhibited at DR. Sun Yat Sen Gardens, located at 578 Carrall St.

July 25 - August 4, 2002. "The Next Wave: Textile Art," works by textiles students will be held in the Capilano College Studio Art Gallery. Located at 2055 Purcell Way, North Vancouver.

July 26 - August 6, 2002. The Fran Willis Gallery presents "Island Tides: Juried Guild Show," with works by the Vancouver Island Weavers' and Spinners' Guild. Located in Suite 200, 1619 Store St., Victoria.

July 27 - August 30, 2002. Gallery Gachet presents "Twisted Threads," a multi media approach to textile practices. 88 E. Cordova St.

craft calendar

July 28 - August 21, 2002. The Kariton Gallery and the Abbotsford Arts Council present the "Textiles - Student and Instructor Show." Located at 52387 Ware St., Abbotsford.

July 29 - August 31, 2002. Karen Urbanek and Joan Maur display their works of Fibre Art, at the New Westminster Arts Council. Queens Park, New Westminster.

July 30 - August 18, 2002. "A Common Thread" works by four Vancouver Island Fibre Guilds will be exhibited at The Old School House Arts Centre, 122 Fern Rd. West Qualicum Beach.

August 1 - Sept. 4, 2002. "Explorations in Layering, Wrapping, and Lacing." Invited textile artists will exhibit their work at Circle Craft Gallery, 1 - 1666 Johnston St.

August 1 - 31, 2002. "Small Expressions," an HGA Juried Exhibit, hosted by the Canadian Craft and Design Museum. 639 Hornby St., Vancouver.

August 1 - September 2, 2002. "20/03 Vision: Regional Reflections" BC fibre exhibit to coincide with Convergence 2002. Opening reception: Saturday, August 3, 2002, 6:00 - 8:00pm, Craithouse.

September 6 - 30, 2002. "Knick Knack Paddywack" Nancy Walker. A ceramic exhibit of hand built clay pieces that explores no-nonsense nonsense. Opening reception: Thursday, September 5, 2002, 6:00 - 8:00pm, Craithouse.

October 4 - November 4, 2002. "Much Depends on This Quilt" Daphne Harwood. An installation of quilts and artifacts looking at historical developments leading to the production of a quilt. Opening reception: Thursday, October 3, 2002, 6:00 - 8:00pm, Craithouse.

November 8 - December 2, 2002. "Out of the Blue" Michelle Mathias. A sculptural / mosaic exhibition exploring the theme of "sky" Opening reception: Thursday, November 7, 2002, 6:00 - 8:00pm, Craithouse.

December 5, 2002. "Surprise Packages" An annual fundraiser for CABC. For further information, contact Calvin Taplay, Communications Coordinator, 604-687-6511.

Funding

Deadline: Ongoing. Elizabeth Greenshields Foundation. Supports artists in the early stages of their careers who are working in painting, drawing, printmaking or sculpture. They must have started or completed art school training and must demonstrate, through past work and future plans, a commitment to art as a lifetime career. Grants of \$10 000 may be used for any art related purpose: study, travel, studio rental, purchase of materials, etc. Amount: \$10 000. Contact: Elizabeth Greenshields Foundation, 1814 Sherbrooke St. West, Suite #1, Montreal, QUE H3H 1E4, tel: 514 937 9225, fax: 514 937 0141.

Deadline: Ongoing. Goebel Canada. Awards for porcelain sculpture totalling \$25 000. Amount: \$25 000. Contact: Goebel Canada, Marcel Brandst, President, Goebel Canada 1200 Camforth Rd., Toronto, ON M4A 3K7

Deadline: Ongoing. Canadian Native Arts Foundation. Assists talented aboriginal artists with financial aid for education and training in the arts, including crafts. Contact: Canadian Native Arts Foundation, 70 Yorkville Ave. Suite 33A, Toronto, ON M6R 1B9, tel: 416 926 0775.

Deadline: Ongoing. Joan Auld Scholarship. A scholarship valued at a minimum of \$200 is available to a student undertaking full-time studies in a craft related field at a recognized institution of craft and design. In order to be eligible for the scholarship, the student must demonstrate high school graduation or equivalency. Amount: \$200+. Contact: Joan Auld Scholarship, PEI Crafts Council, 156 Richmond St., Charlottetown, PE C1A 1H9, tel: 902 892 5152, fax: 902 628 8740, email: info@peicraftscouncil.com.

Deadline: Ongoing. Canada Council for the Arts - Travel Grants to Professional Artists (Craft). Amount: \$2,000; \$1,500; \$1,000 or \$500. Contact: Canada Council for the Arts, 350 Albert St., PO Box 1047, Ottawa, ON K1P 5V8, tel: 613-566-4414 ext. 4267 or toll free 1-800-263-5588, fax: 613-566-4332.

Deadline: Ongoing. City of Vancouver, Office of Cultural Affairs - The Public Art Program for Civic and Private Development. Amount: Varies. Contact: City of Vancouver, Office of Cultural Affairs, City Hall, 453 West 12th Ave., Vancouver, BC V5Y 1V4, tel: 604-873-7487, fax: 604-871-6048.

Tanglewood Arts & Crafts Market

CALL FOR ENTRY

A new on going indoor arts and crafts market located 2 blocks southwest of Granville Island in Vancouver. Tanglewood Market showcases original paintings, sculptures, furniture, pottery, jewelry, functional art, and other interesting work by BC artists and craftspeople.

We currently feature work by over 50 artists and craftspeople and plan to expand our repertoire to accomodate work by 100 to 200 artists and craftspeople.

As a year round establishment, in addition to selling your work to tourists and residents of the lower mainland, we put an emphasis on promoting custom order work to our clients.

If you live in BC and are looking for a year round venue to consign and sell your work, or a weekend exhibit space to observe the public's reaction to your work, we may be just the place that can help you achieve your objective.

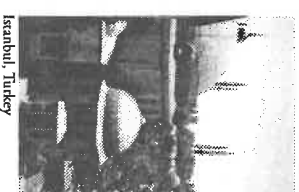
For more information

Contact: Jonathan Chow
1614 West 3rd Ave., Vancouver, BC V6J 1K2
Phone or Fax (604) 737-3668
www.TanglewoodMarket.ca (in construction)

Travel to Turkey and Mexico

Turkey Istanbul, Ankara, Cappadocia

September 16-October 3
Workshop/excursion/historical and cultural tours. Istanbul ceramics collections, artist studios, Topkapi palace, Aya Sophia, Blue Mosque, Bosphorous ferry trip, Ankara ceramics collections at the Museum of Anatolian Civilizations. Work with local ceramist Ergodan Gulce in Avanos, Cappadocia (or optional drawing course). Explore 13th Century underground cities. Extend your stay and consider optional trips to Ephesus, Troy, and Greek Islands. Fee \$3195-\$3395Cdn. Includes airfare from Vancouver, internal airfare, accommodation, breakfast, tuition, tours, and transfers. Deposit \$150 by May 20.



Istanbul, Turkey

Mexico Clay Workshops with Denys James San Miguel de Allende



San Marcos: pottery forming

November 28-December 13
Handbuilding workshop/excursion/language/ art/tours. Denys' workshop focuses on surface treatment and firing options at low temperature. Also available: silverwork, drawing, painting, Spanish, bronze casting and more. Fee \$1995-2195. Includes airfare from Vancouver, transfers, accommodation, all meals, tuition. Variable return dates available. Deposit \$100 by August 1.



Oaxaca: building adobe kiln

Mexico Oaxaca

January 16-February 4, 2003

Workshop/excursion/language/ art/village life/ecotourism/hiking/riding/Pre-Hispanic ruins Handbuilding, surface development and low temperature firing including saggar, pit, Raku. Fee \$2050-2250Cdn. Includes airfare from Vancouver, transfers, tuition, homestay and breakfast with Mexican family, Spanish instruction, ancient pottery forming and firing day in Zapotec village, visit to Monte Alban. Deposit \$100 by August 20.

Information or Registration

Denys James
182 Welbury Drive
Salspring Island, BC
V8K 2L8 Canada
Phone/Fax 250 537 4906
<denys.james@hotmail.com>
www.denyjames.com



28th ANNUAL CHILLIWACK CHRISTMAS CRAFT MARKET

NOVEMBER
14, 15, 16, 17, 2002

CALL FOR CRAFTERS!

Next Jurying is June 12, 2002



CHILLIWACK ARTS COUNCIL
45899 Henderson Avenue
Chilliwack, BC V2P 2X6
Phone (604) 792-2069 Fax (604) 792-2640

AUGUST 2-5, 2002

Quality arts, crafts, music,
children's entertainment &
food in the park by the ocean.

GUEST ARTISTS:
Ted Harrison &
Margaret Hansen

The
Filberg
Festival

COMOX, B.C.

Adults: \$800 Children (6 - 12): \$200
No pets are allowed on the grounds
Open 11 am - 8 pm (11 - 6, Monday)
Park & Ride Bus during the Festival,
park at Comox Rec. on Noel Ave.
Information: (250) 334 - 9242
e-mail: info@filbergfestival.com
61 Filberg Road, Comox, B.C.

www.filbergfestival.com

Deadline: Ongoing. The Banff Centre for the Arts - Banff Residences. The Ceramic and Sculpture Studios at the Banff Centre for the Arts are accepting proposals from professional artists for self-directed creative residencies. Artistic merit is the basis of selection. Amount: . Contact: The Banff Centre for the Arts, Box 1020, Station 40, 107 Tunnel Mountain Drive, Banff, AB T0L 0C0, tel: 403-762-6180.

Deadline: May. Vancouver Foundation - Visual Arts Development Award (VADA). For professional artists working in any medium looking to develop their skills or explore new techniques or processes. Amount: \$3,000 to \$5,000. Contact: Vancouver Foundation, c/o Contemporary Art Gallery, 555 Hamilton St., Vancouver, BC V6B 2R1, tel: 604-681-2700, fax: 604-683-2710, email: cag@axionet.com.

Deadline: May 31. BC Arts Council - Scholarship Awards (Junior and Senior categories). Assistance with post-secondary education on outstanding BC students of the arts. Amount: up to \$2,000 - \$3,000. Contact: BC Arts Council, Box 9819, Stn Prov Govt, Victoria, BC V8W 9W3, tel: 250-356-1718.

Deadline: May 31. Crafts Association of British Columbia - Grace Cameron Rogers Scholarship. Awarded to a practicing or emerging crafts person to attend a recognized school or course to upgrade technical or design skills, or to seek stimulus for greater creativity and inspiration. Amount: approximately \$1,000 - \$1,500. Contact: Crafts Association of British Columbia, 1386 Cartwright St., Vancouver, BC V6H 3R8, tel: 604-687-6511 or toll free 1-888-687-6511, fax: 604-687-6711, email: cabc@telus.net.

Deadline: June 1. Sheila Hugh Mackay Foundation - Individual Grants. To provide "seed" money to visual artists and craftspeople for projects which increase knowledge of participation in and appreciation of Canadian arts and craft and their importance in the cultural heritage of Canada. Amount: up to \$500. Contact: Sheila Hugh Mackay Foundation, 3107 Rothesay Rd., Rothesay, NB E2E 5V3, tel: 506-847-5322, fax: 506-849-1881.

Deadline: September 2002. Canada Council for the Arts - Quest Program - Multidisciplinary Creation Grants to Emerging Artists. Provides assistance to individual emerging artists for a creation project either within a single artistic discipline or in a combination of disciplines. Amount: maximum of \$7,000. Contact: Canada Council for the Arts, 350 Albert St., PO Box 1047, Ottawa, ON K1P 5Y8, tel: 613-566-4414 ext. 4086 or toll free 1-800-263-5588 ext. 4086, fax: 613-566-4409, email: zan.chandler@canadacouncil.ca.

Deadline: September, March. BC Arts Council - Professional Development Assistance. Subsidizes tuition and course-related costs to assist practicing professional artists or arts administrators. Amount: 50% of costs up to \$1,500. Contact: BC Arts Council, Box 9819, Stn Prov Govt, Victoria, BC V8W 1N3, tel: 250-356-1718.

Deadline: November. BC Arts Council - Project Assistance for Visual Arts. Assistance for professional visual artists for specific creative projects. Amount: up to \$5,000 during one fiscal year. Contact: BC Arts Council, Box 9819, Stn Prov Govt, Victoria, BC V8W 9W3, tel: 250-356-1718.

Deadline: Not provided. Association of Universities and Colleges of Canada - Study Craft Overseas. The Association of Universities and Colleges of Canada awards overseas scholarships to Canadian citizens for undergraduate or post-graduate studies including crafts. Send 20 slides of 20 original works. Amount: . Contact: Association of Universities and Colleges of Canada, Contact Awards Division, AUCC, 151 Slater St., Ottawa, ON K1P 5N1, tel: 613-563-1236.

Craft Shows

Ongoing. The WestCoast Sunday Art Market on Robson invites professional artists adept at selling their own work to exhibit in our

market. Market open every Sunday at 1400 Robson St., Vancouver. Visit www.westcoast-artmarket.com or contact (604)733-3794/987-2279 for info.

Saturdays 10am - 2pm. Every Sat 10am-2pm, Now to Oct 27th, 2001, Set-up 8 - 10am and Nov 3rd, Dec 1st, Jan 5th, Feb 2nd, March 2nd, April 6th and May 4th, June 1st and then every Sat until October 26th, 2002, Northshore Winter Club, 1325 East Keith Road / Mountain Hwy, Rear Parking Lot Beside Bridgeman Park. Call Lyn 604 739 9002

www.artmarketonline.com, CALL FOR ENTRY, Art Market Online is a juried art and craft web site marketed in conjunction with a quality art and craft sale. Instead of renting a booth you rent a page. Show and sell your work directly to consumers. Your products available year round without travel expense or time away from the studio. Call today for your information flyer. Be part of the future today!! DATES: 365 days a year, LOCATION: The INTERNET: www.artmarketonline.com, CALL: Toll Free 1-877-929-9933 or 250-672-2411 Fax: 250-672-9517 E-mail: info@artmarketonline.com Marlene Loney, Art Market Productions, P.O. Box 190, Bartiere, BC V0E 1E0

Ongoing. Bowen Island Sunday Market, Snug Cove, Bowen Island. 18 min. from Horseshoe Bay by BC Ferry. Info: Basia Lieske (604) 947-0640; Site R21, Bowen Island, B.C. V0N 1G0; email: plieske@axionet.com. This is a SMALL outdoor craft market held every Sunday from June 30 to Labour Day. Fantastic location, off the boardwalk overlooking Howe Sound. Space under marquee tents is available on a 1st come 1st serve basis. Juried. Crafters do not have to sign up for the whole season. Market hours: 11 am to 4pm.

June 6, 8 & 9, 2002. Jewelry in June & Gardens. Thurs June 6th 5:00-9:30, Sat 8th 11:00-5:30, Sun 9th 11:00-5:30. 6488 144th Street, Surrey, BC V3W 5R4. Contact Serena Bartok ph: 604-543-8679 fax: 604-543-3767 email: sardeargata@hotmail.com. Juried. Rates \$50-\$70. Application deadline May 24. A gathering of talented artisans. Jewelry & related products plus gardeners delights. Wine and cheese served.

November 9 - 10, 2002. Christmas Craft & Gift Market #1, 15th Year, 10am - 5pm. BC crafts in the Floral Hall and International gifts on the walkway and entry, Van Dusen Gardens, Call Lyn, Artisan Markets, 604 739 9002, 11am to 6pm only.

Nov. 14 - 17, 2002. CALL FOR ENTRY, ART MARKET, Art and Craft Sale, 16th Annual, 210 Artisans. Juried, High Quality Event, LOCATION: Telus Convention Centre, (City Centre) Calgary, AB, CALL: Toll Free 1-877-929-9933 or 250-672-2411, Fax: 250-672-9517 E-mail: info@artmarketonline.com, www.artmarketonline.com, Marlene Loney, Art Market Productions, P.O. Box 190, Bartiere, BC V0E 1E0.

November 16 and 17, 2002. Christmas Craft & Gift Market #2, 15th Year, Van Dusen Gardens, 10am - 5pm, Canadian Crafts only, Call Lyn, Artisan Markets, 604 739 9002, 11am to 6pm only.

December 7 - 8, 2002. Christmas Craft and Gift Market #3, 15th Year, Vandusen Gardens, 10am - 5pm, BC crafts in the Floral Hall & Int'l gifts on the walkway & entry. Call Lyn, Artisan Markets, 604 739 9002, 11am to 6pm only.

Market Place

CABC has various computer equipment and parts available to its members for a suggested donation of \$20 per item. Call the CABC office at 604-687-6511 to arrange for a time to see the equipment.

Artichoke, Western Canada's only nationally-distributed visual arts magazine, is publishing Special Editions showcasing Canadian craft art and artists. The first Special Edition, in print in February 2002, features 56 pages of thoughtful commentaries

and reviews, plus luscious full-colour photographs. Contact Artichoke Publishing, 208 - 901 Jervis Street, Vancouver BC V6E 2B6 or visit Artichoke's website www.artichoke.ca

Lectures / Workshops

Ongoing. Jewellery Workshops at Patina. Classes from beginner to intermediate as well as classes in toll preparation and stone setting. Small classes. All tools and equipment supplied. Contact: Patina Designs, 3648 West Broadway, Vancouver, BC V6R 2B7, tel: 604-738-8695.

Workshops at Textile Studio #350 check out the new schedule of workshops and events at www.somepieceofwork.com. Contact us at ssummersgill@telus.net

Basketry Workshops on Salt Spring Island. A variety of workshops offered throughout June, July, August. Beginner/ Intermediate. Emphasis on natural materials. For information or a brochure contact: Joan Carrigan, Fulford Harbour PO Box 95, Salt Spring Island, B.C. V8K 2P2 250-538-1877 lcarrigan@saltspring.com

CONTEMPORARY WORKS IN CLAY

gilded alk!

18th annual exhibition and sale of works by fourteen of Canada's finest ceramic artists.

Featuring "Up & Coming" work by four graduates of Emily Carr College of Art & Design

May 25 & 26, 10 am-5 pm

Metchosin Community Hall, 4401 William Head Rd, Victoria

Info: 474-3891 • Free admission

Come and meet the artists

Call for Volunteers

Crafthouse is a non-profit gallery/shop and is a program of the Crafts Association of B.C. (CABC)

Crafthouse provides an outlet for the display and sale of fine traditional, contemporary and leading edge crafts, and provides craft-related information and education to the CABC membership, general public, professionals in the visual arts community, and crafts people. Crafthouse aims to be self-supporting in its promotion of craft.

- Volunteers are an integral part of Crafthouse's existence.
- A volunteer works a half day or more each week, generally with another Crafthouse staff member, but occasionally alone. Your weekly commitment is essential to the running of Crafthouse!
- A commitment until the middle of September is required.
- Volunteers are given 2 days of training which includes craft technique orientation.
- After 30 hours of volunteer time, or 6months (whichever comes first) a volunteer receives a 10% discount in Crafthouse.

This position is best suited for those with an interest in craft, some retail background, excellent English speaking skills, and an outgoing cheerful personality. Flexibility is required.

For additional information on becoming a volunteer at Crafthouse please contact: Jo Darts, Shop Manager at 604-687-6720 or send an email to crafthouse@cabc.net.

In Celebration of Women!

The Challenge

Atira Women's Resource Society is proud to present a textile celebration for Women's History Month in October 2002. We are extending a challenge to individuals and textile guilds to create a work celebrating women's lives.

Guilds

Rise to the challenge quilt and textile guilds! The celebration piece you create will be raffled for the fundraising portion of the exhibition. June 1, 2002 is the entry deadline.

Individuals

Attention quilters, weavers, and all fabric/textile artists! Submit a piece for display in Atira's "In Celebration of Women" exhibition. August 31, 2002 is the entry deadline.



For more information or a copy of the application, contact Michelle at Atira at 604-531-9143 (x. 2) or visit our web site at www.atira.bc.ca and go to "What's New"



ISLAND MOUNTAIN ARTS
School of the Arts and Public Gallery
Located in Wells, BC near Barkerville Historic Town

Summer Workshops in Wells

July and August 2002

Wells Artists' Project - Professional or Emerging Artist
Courses for adults and children in all skill levels:

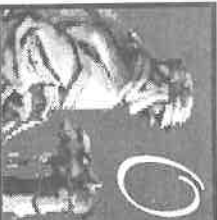
Elements of Colour & Design, Landscape & Portraiture, Watercolour,

Acrylic, Oils, Basketry, Sculpture,

Life Drawing, Acoustic Music, Writing,

Toll Free: 1-800-442-2787

www.imarts.com



Out of Hand Craft Fairs

2002 Events schedule

SUMMER

28th Annual

Victoria FolkFest

June 29th - July 7th

Do all nine days or choose one of two sessions

On Victoria's beautiful Inner Harbour, this is a highly visible and popular event with exotic music, dance, art and family fun. 106 shows featuring everything from Cuban jazz to hip-hop. Only 40 spaces available Booth prices vary - Juried show - 100,000 tourists and locals attend

WINTER

14th Annual

Out of Hand Christmas Fair

November 14th - 17th

Held at the Victoria Conference Centre (attached to the Empress Hotel). This extremely popular juried fair is a Victoria Christmas tradition.

130 booths, hotel discounts, Exhibitor lounge with free coffee and tea, Credit card service, booth relief, free bags, and more.

For more information on these shows

Contact: Ramona Froehle-Schacht

Phone or Fax 250 592-4969

ramona@outofhand.ca or visit www.outofhand.ca



Jewellery

Workshops

PATINA

designs

3648 WEST BROADWAY
VANCOUVER, B.C.
V6R 2B7

TEL/FAX: (604) 738-8685

Call us to be put on our mailing list
for the next Class Schedule!

TEL / FAX: (604) 738-8685



The "Original"

20TH Anniversary
Apply NOW

at
VANDUSEN
BOTANICAL
GARDEN

NOV 23 - 24

NOV 30 - DEC 1

To Apply Contact:

Simone Avram

UCM Promotions Ltd.

8012 Wild Wood Rd.,

Halfmoon Bay, BC V0N 1Y1

1-604-885-2779 or

1-604-275-2724

KENMAYERSTUDIOS

SUITE 111
1000 PARKER STREET
VANCOUVER

BRITISH COLUMBIA
V6A 2H2 CANADA

T 604 874 2259
E KMAYER@TELUS.NET

PHOTOGRAPHER FOR ARTS & CRAFTS

Emily Carr Institute
of ART + DESIGN

...Continuing Studies

Unlimited Possibilities
Art + Design

- Portfolio Development
- Professional Development
- Certificate Programs
- Summer Institute on Book Arts
- Summer Studio for Art Teachers
- First Nations Studio Art, Design and Technology

604 844 3810
emilio@ecid.bc.ca
<http://www.ecid.bc.ca>

CALL FOR ENTRY

16th ANNUAL

ART MARKET

NOVEMBER 14-17, 2002

Telus Convention Centre

Calgary, Alberta

210 High Quality Artisans

ART MARKET

PRODUCTIONS

MARLENE LONEY

P.O. BOX 190

BARRIERE, B.C. V0E 1E0

TOLL FREE: 1-877-929-9933

FAX: (250) 672-9517

EMAIL: info@artmarketonline.com

www.artmarketonline.com

CALL FOR ENTRY - CABC goes to the San Francisco International Gift Fair, August 2002

CABC is gearing up to attend our first US wholesale tradeshow in San Francisco this August. Staff participated in an EXLUS Mission last year (Exporters to the US, supported by the Department of Foreign Affairs and International Trade, and the Seattle/Los Angeles Canadian Consulate offices) to research this show and introduce CABC to several of the local buyers of fine craft. CABC had originally planned to attend this show in February of this year, but do to the down-turn in the North American economy, chose to postpone our involvement until now.

In the last issue of *Craft Contacts*, members were encouraged to register with the CABC office if they were interested in attending - we needed to have some participants identified for funding opportunities. There is still time to join us if you are interested in wholesaling your work to the lucrative American market. Are whole sale and export ready? Do you want to enter the Californian market, the largest market on the West Coast? With over 26,000 buyers, relatively easy access north-south, and our combined wholesaling savvy, join the CABC as we represent our members' work at the August 2002 San Francisco International Gift Fair (SFIGF).

Application is open to members of the CABC who are export ready. This is an opportunity for craftspeople to enter the lucrative American market at an affordable price.

Application Requirements

- A resume or CV detailing your business and artistic experience
- Previous trade show / wholesale experience (if not included in the above)
- A list of present American buyers
- 3 - 5 samples of your products (additional photographs if necessary)
- Wholesale price lists (one in CDN dollars and one in US dollars) and description of work being submitted
- Samples of business/promotional materials (brochures, cards, order forms, etc.)

Applications will be judged on quality of work, suitability for wholesale markets, previous experience and degree of exposure in the American market.

Costs of Participation

- *Approximately* \$500 per participant (the final amount will not be known until we receive notification of two pending funding requests)
- 15% commission on all first-time orders, both those taken during and after the show (+GST on the commission amount)
- Shipping costs to and from CABC, and a prorated portion of shipping and brokerage to and from the show

Deadline for Submission is May 1, 2002.

If you require further information please contact Jane Matthews, Executive Director, at (604) 687-6511 or toll-free 1-888-687-6511 (within BC), or Jo Darts, Manager, Craithouse at (604) 687-7270, or by email, cabcc@telus.net.

Join the Crafts Association of British Columbia

benefits of membership:

- Craft Contacts Newsletter
- Craft Shows, publication
- Website: www.cabc.net
- CABC Reference Centre
- CABC Artist Registry
- Commissions & Referrals
- CABC Video Lending Library
- Scholarship opportunities
- Exhibition opportunities
- Sales opportunities, Craithouse Shop
- Discounted prices on CABC publications & programs
- 10% Discount on purchases in Craithouse
- Visa & MasterCard Merchant Discount
- Business & Health Insurance Programs
- Voting privileges

☐ Membership Fee \$53.50

Method of Payment

- ☐ Cheque ☐ VISA
☐ MasterCard ☐ American Express

Card # _____

Exp. Date _____

Signature _____

NAME _____

COMPANY _____

ADDRESS _____

CITY _____ PROVINCE / STATE _____

POSTAL CODE / ZIP _____ TEL _____

FAX _____ EMAIL _____

Are you a craftsperson? _____

What media do you work in? _____

☐ Yes! I would like volunteer information

Mail or Fax to: CABC
 1386 Cartwright Street
 Vancouver, BC V6H 3R8
 Tel. (604) 687-6511
 Fax. (604) 687-6711

Volunteer Opportunities

Join one of our committees

- do you have an interest in design? (renovation committee)
- do you have an interest in what happens in Craithouse or in the Gallery? (Shop or Gallery Committee)
- do you have experience with personnel, human resource issues? (HR committee)

Write a short article about a craftsperson or craft event in your community. Assist with an event such as Gallery openings, the Canada Day craft crawl on Granville Island, or even the Annual General Meeting.

Contact us - we'd love to hear from you. Join a dedicated group of other members who volunteer their time for the benefit of the CABC community as a whole. It's easy, and fun! Please contact the CABC at (604) 687-6511, (888) for long distance callers, or by email at cabcc@telus.net.

abonee-S Designs

Presents

"*It is the Season*"

11th Annual Blended Home Craft Fair
 From Saturday November 2, 2002 To
 Sunday November 10, 2002

You and your friends are welcome to come join us for an extraordinary shopping experience either for yourself or gifts for the coming Christmas Season

Daily hours of operation:

Saturday & Sunday Nov. 2th & 3th (10:00am - 5:00pm)
Monday Nov. 4th (10:00am - 9:00pm)
Tuesday Nov. 5th (10:00am - 9:00pm)
Wednesday Nov. 6th (10:00am - 9:00pm)
Thursday Nov. 7th (10:00am - 9:00pm)
Friday Nov. 8th (10:00am - 9:00pm)
Saturday & Sunday Nov. 9th & 10th (10:00am - 5:00pm)

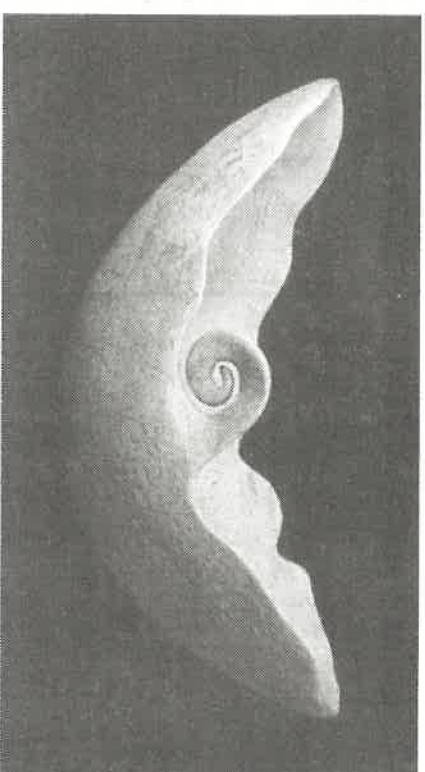
9263 Prince Charles Blvd. Surrey, BC

- Join us for coffee.
- Daily door prize draws.
- Theme rooms including Men's, Children's, Victorian & Country.
- There is no entrance fee but a donation to the Surrey Fire Dept. Charity would be greatly appreciated.
- Visa & Mastercard Accepted.

Interested crafters call 604-584-0451

Craft Shows 2002

A Guide to Craft Shows in British Columbia and Beyond



Ceramic Sculpture by Rachelle Chinnery
 Photo taken by Emu Goto

Published by the Crafts Association of BC, **Craft Shows 2002** is your guide to craft shows and fairs throughout BC, Canada and the US. Available at CABC. To order your copy call 604-687-6511/ toll free: 1-888-687-6511 in BC or e-mail: cabcc@telus.net.

CABC members free
Non-members \$9 + GST