

craft contacts

CABC

Crafts Association of British Columbia
1386 Cartwright Street
Granville Island
Vancouver, BC V6H 3R8 (604) 687-6511

The CABC gratefully acknowledges the financial support of
the **Ministry of Municipal Affairs, Recreation, and Culture**

June 1991 News

ISSN 0319-8873

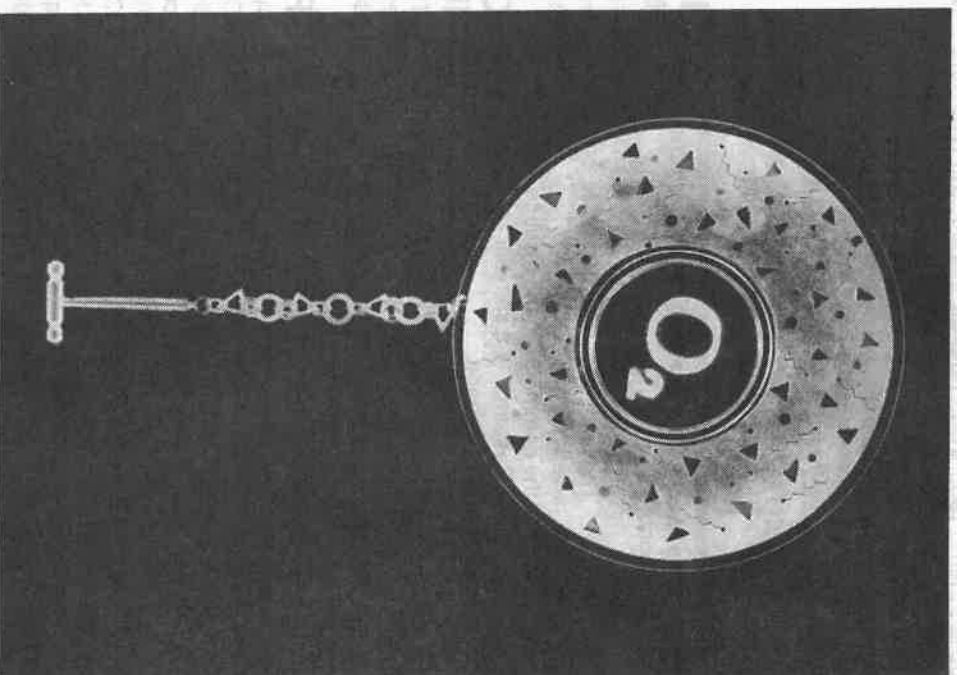
THE MEDIUM IS METAL: THE FOCUS IS RESOURCES

May 4, 1991 marked the unveiling of the Metal Arts Guild exhibition of winning pieces of 31 Canadian metal artists. **The Medium Is Metal: The Focus Is Resources** represents a great variety of "resources" including metal. Artists were encouraged to make a statement of our resources of the past, present, and future. The use of recycled and found objects was to be considered. The use of material from endangered species was strongly discouraged. Along with technical strength, jurors Lloyd Herman, Carol Kumata, and Bill Ottmiller found fascinating combinations of materials: precious and non-precious metals juxtaposed against an eclectic array of goods, including phonograph records, tin cans, coconut shells, rubber tubing, broom straw, pine needles, photographs, broken glass, and aluminium foil. Ann L. Lusden's brooch, entitled *In the Case of Emergency* combines silver, nickel silver, 24kt gold plated brass, niobium watch crystal, and ceramit. The exhibition has left Ashton's in Toronto, where it made its debut, and presently it is circulating in venues across Canada. In August, the Alberta Crafts Council will host the show in Edmonton.

JR

YOUNG AT ART

On May 22, at the offices of Peat, Marwick, and Thorne, young women and men from Vancouver's business community met with the city's cultural leaders as a part of "Young at Art," a program organized by the Council for Business and The Arts serving to recruit new board members/volunteers for non-profit organizations. Although representing Vancouver's various areas of expertise relating to the realms of finance, communication and resource management, all attendants shared an abundance of enthusiasm. Some had specific areas of interest similar to the needs of particular organizations. The CABC is seeking the services of a financial person to chair the Finance Committee and spearhead a fundraising operation. President Ron David and Executive Director Gail Rogers, after perusing resumés and chatting



In the Case of Emergency. Ann L. Lusden

with the prospective supporters, chose three individuals. All that is left for those three to choose the CABC.

Although the results of this premier meeting have yet to be seen, the promise to bring these two groups together is a good one. The CABC hopes for its success. "I was impressed with the process and trust that it meets our expectations."

Craft Contacts

says Rogers. "But even if nothing results this time, I would like to acknowledge the good work being conducted by Sarah Illey, 'Young at Art' coordinator."

BUSINESS SPURNING CHARITY

One per cent "too much to ask"

Reprinted from the Wednesday, May 22 *Province*.

Toronto (Canadian Press) - Canadian corporate donations have been falling for more than 30 years and the situation has reached crisis proportions, a seminar was told yesterday.

And Allan Taylor, chairman of the Royal Bank of Canada, said charities shouldn't expect governments to pick up the slack.

Corporate Canada is giving about half what it gave in donations in the late 1950's and early 1960's, said Taylor, who is also chairman of the corporate program of Imagine, the national program aimed at encouraging and volunteering donations.

In 1989, . . . total giving was actually less in absolute dollars than in 1983, though total pre-tax profits in 1989 were \$22 billion more than the 1983 total.

Taylor says it makes good business sense for companies to adopt the Imagine proposal of putting aside one per cent

. . . charities shouldn't expect governments to pick up the slack.

of their three year average pre-tax profits toward charity and volunteer work.

"Healthy, thriving, lively communities are not just nice to have," he said. "They are part of a corporate competitive edge - part of Canada's competitive edge."

Taylor made the comments to the Institute of Donations and Public Affairs Research at a seminar sponsored by the Conference Board of Canada.

Organizations looking for money during the recession are going to have to do some belt-tightening themselves to improve their efficiency, he said.

But the chief economist of the Conference Board said one per cent may be too lofty a goal.

In an interview before his presentation, Jim Frank said charities face difficulties resulting from government funding cuts, inflation, and high unemployment - as well as competition among the 64,000 federally registered charities.

The recession is making corporations more tight fisted, he said. Frank predicts charities will probably only be able to raise between 0.63 per cent and 0.77 per cent of companies' pre tax profits.

About 213 companies have made a commitment to Imagine, Taylor said. But Frank said their are thousands of companies they haven't made any kind of pledge to charity. And Maj. Carson Janes of the Salvation Army said companies are becoming more picky about who gets their money.

The Salvation Army is in the middle of its annual Red Shield campaign, hoping for some \$32 million.

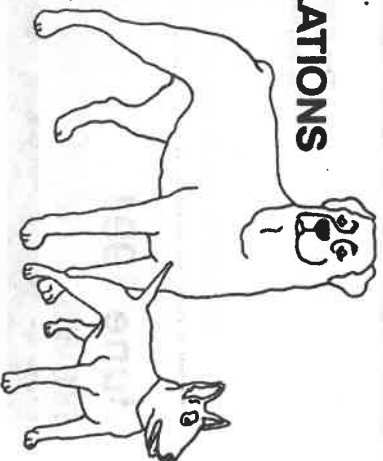
"We are optimistic," said Janes. "We have to be. If you're not optimistic in the fundraising field, then you've lost the bet already."

MEMBERS WIN PUBLICATION CONTEST

Several CABC members have been accepted for publication in Handwoven Magazine's scarf contest. Elizabeth Bell's scarf won the "People's Choice" Award and will be featured in the September issue. Scarves by Jo Anne Ryeburn and Mary Bentley have also been chosen and will be in future issues of the magazine.

CONGRATULATIONS

To Michelle Weeks and Bruce Devereux on their new company, Ruby and Boe Art and Design, specializing in unique, quality children's hats, featured through the summer months at the Granville Island Public Market.



RUBY + BOE

Vancouver, Canada
K: d's 4655
682-2484

Yves Trudeau and Studio One Glass Art have successfully completed a slab glass project for the Chapel at St. Vincent's Hospital in Vancouver.

1991 DOROTHY MCMURDIE AWARD RECIPIENT

The Canadian Quilters' Association/ Association Canadienne de la Couturepoint is pleased to announce the winner of the 1991 Award is Eunice McLeod of Stroud, Ontario.

CQA/ACC WELCOMES INCOMING PRESIDENT

The Canadian Quilters' Association/ Association Canadienne de la Couturepoint wishes to welcome their new president - Judith Burley from Nelson, British Columbia.

ROOM AVAILABLE

Attention all those going to Seattle on July 11 for the Surface Design Conference, Perspectives from the Film. Members of the Vancouver Guild of Fabric Arts are hosting a pre-conference bus tour on July 10, which includes a trip to the loco studio of Barbara Shelley and Bravo Children's wear. Open to the public, it has a cost of \$35, including a box lunch. Join the international visitors and guild members at a banquet that evening for \$20. There may also be room on the bus going to Seattle, which will make two "art stops" on the way down from UBC. Cost: \$20 one way. For information on the conference, carpools, or the tour, call Peggy Shofield at (604) 736-1016.

The CABC is always looking for new material. If you have any craft related articles give the CABC a call at (604) 687-6511, or send material and/or suggestions to: 1366 Cartwright Street, Vancouver, BC V6H 3F8

Report

CREATIVE EXPRESSION IS IN FULL FLUSH AT KOHLER FACTORY

Reprinted from the Wednesday, May 22 *Wall Street Journal*.

By Cynthia Crossen

What do you call an elliptical vitreous china bowl juxtaposed with a cistern of the same ceramic material, embellished with a small piece of molded metal?

Toilet or art?

At the Kohler factory, in Kohler, Wis., it could be either. Here, in the company's 191 acre complex, 3000 blue collar workers turn out thousands of toilets, bathtubs, and sinks a day, mostly by hand. Alongside them, a small band of artists turns out modern art: cast-iron handbags, ceramic carrots - and surrealistic toilets and sinks.

The Kohler factory is the setting for a brave experiment in American diversity. Artists and factory workers rarely interact in day-to-day life, and their social values - politics, religion, hobbies - tend to be different. Yet they have one thing in common. "Artists come here to fabricate and solve problems, and that's pretty much what the workers are doing," says Jim Neiman, until recently the official liaison between artists and workers.

Although the results of the project can't be quantified, both groups say the project forces them to rethink art, bathroom fixtures, and each other. "At first, the employees were very sceptical," says Ruth Kohler, the program's creator and a member of the company's founding family. "They had a stereotypical view of artists as flaky and not necessarily having the skills that the factory people had."

Over the years, however, the workers and the artists began to appreciate each other's crafts. For the artists, the factory is rich with creative possibilities. Arnold Zimmerman,

a New York sculptor, explains: "the factory is an endless source of inspiration for forms and the way things are made and put together. Seeing 200 tubs lined up and still warm from the mold - it's like nothing you've ever seen."

Often, this fascination translates into art. David Tell came to the factory to create assemblages of agrarian detritus and ended up making wine goblets from brass showerheads. Ann Gee, who came to make teapots, was drawn to a toilet. "I had daydreamed about making a toilet," she says, "but I didn't know I'd spend so much time on it."

The program is a project of the John Michael Kohler Arts Center and is partially funded by the National Endowment for the Arts. The space, materials, technical assistance, and most of the cash come from Kohler, a privately held company with annual sales of \$1.4 billion.

To earn a privilege of a four month stint in the factory,

"The factory is an endless source of inspiration for forms and the way things are made and put together."

artists from around the country are put through a rigorous selection process. They are given transportation to the factory, a room, steel-toed boots, safety glasses, a bicycle, and a weekly stipend. The artists can go practically anywhere in the factory, and they can use any raw materials they find. They are, however, limited in the number of finished fixtures they can commandeer, thanks to an early participant who decorated 65 sinks with abstract designs.

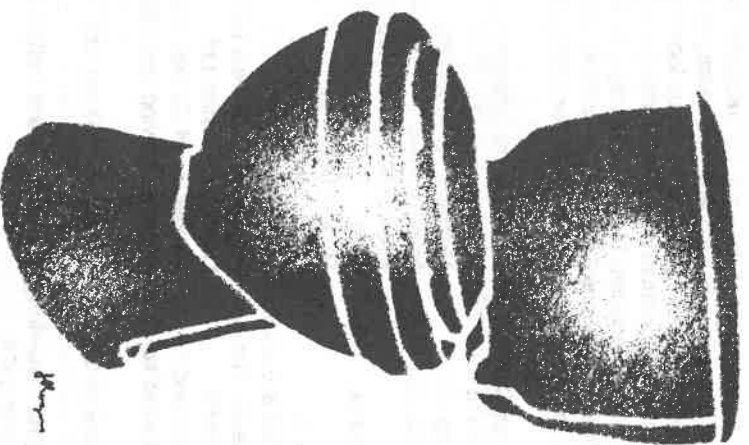
Many of the artists work in the pottery, the warm and relatively quiet place where toilets are cast. Others find themselves drawn to the foundry, a dark, dangerous mill where iron is cast for tubs, sinks, and engine blocks. "Most people are disgusted and shocked by the foundry," says Mr Zimmerman. "I was always slightly afraid; you don't know where you can walk, your peripheral vision is constantly being stimulated, there's stuff going on all around you."

Chris Weaver, an artist now working in the foundry casting a life size deer that doubles as a barbecue grill, calls the foundry "addicting."

In the foundry, workers pour metal so hot - 2500 degrees Fahrenheit - it looks like liquid fire. Some show how tough they are by not wearing hats, gloves, or masks. Darrell Nack, a 21-year veteran of the foundry, calls the smoke, grit, and dirt "just a part of living."

But inside Mr Nack and all the other foundrymen lurks the joy of making their material - iron - defy its natural properties in search of a beautiful shape, be it sink or art. The workers, whose jobs are so specialized that a worker may grind bathtubs for 30 years, enjoy the change and challenge of casting works of art - army boots with swimming flippers attached, an eight foot tall, two-ton bear, a 1950's prom pump. "If [the artists] think it's going to work, we'll give it a shot," says Arlen Pitzen, a foreman in the foundry.

The artists say the workers take considerable risks when casting their molds, and will interrupt their work to oblige. Melissa Stern, a New York artist, tells of casting a large piece one midnight when her mold sprang a leak and molten iron poured onto the floor, igniting a wooden pallet. "John [Trybal, who likes to cast for the artists and only likes big, complicated,



Craft Contacts

dangerous projects, was cursing me, and the other guys were standing around cracking up," Ms Stern says. "It confirmed everything they thought about artists: We're cute and fun to have around, but we're not that smart."

The foundry men hold a special place in their hearts for the artists they call No-Core Brook, who cast many objects, no matter how huge, without a core. The result was art so heavy it was practically immovable, including a 235-pound cast-iron violin case.

"If you don't have a sense of humour, you're dead meat."

For practical reasons, few artists can routinely work in iron. Although the material itself is cheap, the equipment to melt and pour iron is unthinkably expensive. Artists can rent time at commercial foundries, but it is financially risky for a piece that hasn't been commissioned.

When the workers make a bad mold, they have failed. "If there's a flaw, we have to throw it out or fix it," says Eugene Beeck, who worked at Kohler for 32 years.

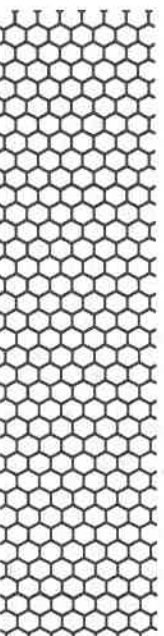
But when the artists make a bad mold, it is art. Mr Weaver's first deer/barbecue grill was a bust - when the hot iron was poured, the core of the mold floated up and broke the deer's back, creating a ragged hole in what was supposed to be a smooth surface. "The workers see the deer and say, 'That's too bad,'" says Mr Weaver. "But I was excited about it."

Similarly, Maria Alquilar, a Santa Cruz, Calif., artist, left some flashing - metal that has leaked through a faulty mold - on some of her work. "The workers said 'You have to take that off,'" she says. "But I liked it, and after a while they came to like it too."

The dialogue between the artists and workers contains a healthy dose of scepticism, a constant testing of the artists to prove what they do really has much value. The most common question the workers ask the artists is "What's that?" "If you don't have a sense of humour, you're dead meat," says Ms Stern.

Some artists can take the constant challenges, and some can't. "I've seen a lot of artists shaken up by very difficult questions -- 'Can you repeat what you're making, could you make a hundred of those?' Or, 'I've seen one of those, why do you have to make another?'" says Mr Neimann. The workers are "brutally honest," he adds.

Yet some have also become art collectors, filling their neat, Midwestern bungalows with dozens of bizarre objets d'art, valued in the thousands of dollars. Mr Nack has a number of pieces given to him by artists. His garden is the site for a cast-iron squirrel with nails driven through it. Mr Nack's choice for the weirdest work: a life-size cast-iron stomach. "It's art," Mr Nack says emphatically. "It's sitting right here in my living room." In his bathroom is a Kohler toilet, priced at \$185.



Editorial

Have you seen the logo on the right? Thirty-eight percent of Canadians say they have, while 14% say they know of the program it represents. What's the bandwagon, you ask? It's "Imagine" - a national awareness campaign promoting philanthropy in the arts and social sector - that's very much worth jumping on to.

And not just because we're between a hard place and a rock (re: *Province* article "Business Spurring Charity" under News). The program's comprehensive, lively approach is what makes it worthy of being embraced. Ignoring the "Speaking Out" kit that the Centre for Philanthropy, the program initiators, will send with a simple phone call, is like ignoring a joyous person who happens graces your path. It shows your weakness of character... not theirs.

But metaphors aside, the kit, with loads of pertinent, concise written information and news of the program's progress, PMT's, and other promotional devices, makes giving a speech on the "new spirit of giving" as simple as 1, 2, 3 (and most important, 4 nothing!). Now it just takes diligent enthusiasm to get that corporation to commit 1% of their domestic pre-tax profits - "Imagine's" recommended proposal.

Having perused the kit myself, what I found to be so promising was the that the old adage "you get what you give" was central to the program's approach. For the rewards of generous behaviour extend beyond the recipient to the benefactor. A city with a thriving arts community is a city people want to move to - people who stimulate local economies, increasing a corporation's potential. With this in mind I'd like to take this opportunity to list, in the way of thanking once again, the corporations who over the years have made contributions, either in time, kind services, or money, to the CABC:

Acer McLernon Canada Ltd.	Knill's Alarm Systems
Aegis Electric Ltd.	Lignum Limited
Arts & Young, Inc.	Macmillan Bloedel Ltd.
Babicki Associates Ltd.	Marathon Realty Company Ltd.
BC Sugar	Preston's Interiors (Bruce Foster)
Canadian Airlines	
Canfor	Rogers Inter Auto
Coast Paper Ltd.	Sauder Industries Ltd.
Colin Campbell & Sons Ltd.	Scott Paper
Colliers Macaulay Nichols	Sterling Newspapers Ltd.
Color Your World	Universal Plastics Ltd.
Coopers & Lybrand	Weldwood of Canada Ltd.
Columbia Bituthitic Ltd.	Williams Moving and Storage
Finning Ltd.	Ltd.
Hongkong Bank of Canada	Woodwards Stores Ltd.

For an Imagine "Speaking Out" kit contact Patty LaFerrer at (416) 368-1138.



Crafthouse

Susan Cain, mixed media sculpture

Artist's statement:

"In my most recent work I've been exploring the human figure, moving from spacious 3D line drawings of gesture to more complex inner-outer relationships. My main material is orchard prunings - fruit wood and grapevines. These either stand alone, or are incorporated with clay and fibre."

On display in the Crafthouse Alcove through June.

Canadian Craft Museum

CUSTOMS AND COSTUMES: THE ETHNIC DIVERSITY OF CHINA

A display of historic and contemporary costumes and jewellery from over 40 of China's 55 ethnic national minorities. China has the oldest civilization in the world - going back some 4000 years. Throughout the many dynasties, its peoples have created so many extremely beautiful styles of dress that China is often called "The Kingdom of Fine Dress."

China's extraordinary diversity is reflected in the many regions and landscapes found within its borders, and in the varied cultural histories of its 55 distinct national minorities. These ancient links that distinguish these groups as non-Han Chinese often surface in the way they decorate themselves with costume rich in colour and history.

American educator Phila McDaniel has travelled to the remotest parts of China collecting the costumes of over 40 different ethnic groups. The resulting display, organized by the Wing Luke Asian Museum of Seattle, Washington, includes 10 complete garments and a large selection of intricately embellished garments, hats, and dramatic silver jewellery.

On display at the Canadian Craft Museum from June 7 to September 29, 1411 Cartwright Street, Granville Island, BC. Tel: (604) 687-8266.

Publications

HITTING THE CRAFT TRAIL

A travel guide/craft guide for the United States, the *Traveler's Guide to American Crafts* by Suzanne Carmichael comes in two volumes. Published by Dutton, New York (an imprint of Penguin Books). The two volumes are \$14.95 US each.

IDEAS FOR INSPIRATION, EMBROIDERER'S EDITION

Fibre artist Pam Godderis has published an easy to read booklet, for beginners to professionals, intended to aid needle artists to develop their own designs. Contact: Pam Godderis, 4804 Claret Street, Calgary, AB T2L 1C1.

TEXTS

Texts is a vehicle for critical writing about contemporary art issues. The publication is produced three times yearly with the assistance of the New Gallery and the Canada Council,

Explorations. Subscriptions, \$12 per year. Contact: TEXTS, 722 11 Avenue, Calgary, AB T2R 0E4.

BOOK SHOWS CLOTHING FOR DISABLED PEOPLE

Clothing for People with Physical Handicaps, by Marjorie Mead, offers solutions to clothing problems involving limited range of motion, limited vision, and figure irregularities, as well as the problems posed by adaptive equipment. For more information contact: William Oschwald, Director, Cooperative Extension Service, University of Illinois at Urbana-Champaign, Urbana, IL 61801.

GUIDE INDEXES CRAFT WORKSHOPS, SCHOOLS

If you've ever wondered where you could study African textiles in Africa, here's a book that can get you going. *The Guide to Arts and Crafts Workshops* contains detailed information on 237 sponsors in over 30 disciplines worldwide. Available in bookstores, or from the publisher for \$US 14.95 plus \$2 shipping. Shaw Associates, 625 Biltmore Way, Coral Gables, FL 333135.

HEALTH AND SAFETY GUIDE FOR ARTISTS

The Artists Complete Health and Safety Guide by Monona Russel is an up-to-date resource manual on potentially toxic art materials, health and safety laws, studio and classroom safety checklists, protective equipment, and non-toxic alternatives. Available for \$US 16.95 plus \$3 postage and handling (\$1 for subsequent books) from North Light Books, 1507 Dana Avenue, Cincinnati, OH 45207.

FIBERARTS DESIGN BOOK FOUR

"Outburst" (handmade paper and shibori silk wallpiece) by Norma Langrish will be included in this edition. Scheduled for release in October 1991 by Lark Books of Asheville, North Carolina.

FIBERWORKS PUBLICATIONS

A number of publications are available: *Nature's Dyepot: A Resource Guide for Spinners, Weavers & Dyers*, *The Fabric and Fiber Sourcebook*, *The Fiberworks Directory of Self-published Books on the Fiber Arts*, *The Fiberworks Bibliography Series*, *Fiberworks Quarterly*, and *The Fiberworks Booklist*. For more information contact: Fiberworks Publications, Box 49770, Austin TX 78765.

GST WORKSHOP HOME VIDEO

A videotape produced by the Canadian Crafts Council, available for sale to member associations for \$75 plus \$5 for postage and handling. Subsequent sets may be ordered for \$75. For more information or to order, contact: Canadian Crafts Council, 189 Laurier Avenue, Ottawa, ON K1N 6P1. Tel: (613) 235-8200, fax: (613) 235-7425.

THE BC HOME BUSINESS REPORT

Working for people working from home. One year subscription \$16+GST. Write to: BC Home Business Report, 2949 Ash Street, Abbotsford, BC V2S 4G5, or tel: (604) 520-5720 or fax (604) 854-3087.

INTERNATIONAL DIRECTORY OF RESOURCES FOR ARTISANS

1990 edition. Available from the Crafts Center, 1001 Con-

Craft Contacts

necticut Ave. NW, Suite 925, Washington, DC 20036. Tel: (202) 728-9603.

THE ARTS RESOURCE BOOK

A fundraising guide specifically for cultural organizations and artists in BC, as well as a directory of federal, provincial, and municipal programs. Order from the Assembly of BC Arts Councils, 201-3737 Oak Street, Vancouver, BC V6H 2M4, tel: (604) 738-0749. Price is \$29.95 plus \$3.50 for postage and handling. The Arts Resource book is in a three-ring binder format for easy use and updates, with an index and bibliography included.

THE GUILD: A SOURCEBOOK OF AMERICAN CRAFT ARTISTS

Sixth edition will include the talents of Canadian craft artists, including such notables as Sadye Bronfman award winners Lutz Hautschild and Carole Sabiston. Scheduled for release in March 1991. For more information contact: Kelly Rude at (416) 469-8381 or the Guild office at (608) 256-1990.

NOT FOR PROFIT, YOU SAY!

An operations and management guide that looks at boardmanship, communications, volunteer administration, public relations, and fundraising. \$24.95 plus \$3 postage/handling and GST. Contact: Open-Up Poste Production, 5515 Jersey Avenue, Burnaby, BC V5H 2L3. Tel: (604) 439-1915.

THE OFFICIAL DIRECTORY OF CANADIAN MUSEUMS

New 1990-91 edition. Over 1900 institutions listed, including locations, telephone/fax numbers, collection descriptions, museum/gallery activities and much more! Contact: Official Directory of Canadian Museums Association, 400 280 Metcalfe Street, Ottawa, ON K2P 1R7.

HERITAGE SOCIETY OF BC

The society has compiled a "Resource Directory" which provides developers, building owners, project managers, heritage advisory committees and other organizations with a list of competent restoration consultants, craftspeople, and suppliers. If interested contact: Heritage Society of BC, Box 520, Postal Station A, Vancouver, BC V2C 2N3 for appropriate forms or contact the CABC for a copy.

THE HOME BUSINESS NETWORK

The Home Business Network now provides a bimonthly newsletter, *The Home Business Advocate*, which reports on the home business market, marketing strategies, and profiles of successful businesses. For more information contact: The Home Business Network, 195 Markville Road, Unionville, ON L3R 4V8. Tel: (416) 470-7930.

BOOKS FOR WOOD TURNERS

John Sainsbury's *Guide to Woodturning Tools and Equipment* (\$24.95US) and *Green Woodwork*, by Mike Abbott (\$16US). Contact: The Wood Turning Center, Box 25706, Philadelphia, PA 19114.

Opportunities

HARCOURT HOUSE WORKSHOP

Harcourt House Arts Centre seeks instructors for art proposals for all ages. Life drawing models also needed. Contact: Harcourt House Arts Centre, 10215 112 Street, Edmonton, AB T5M 1M7. Tel: (403) 425-9087 or (403) 426-4180.

MUGS POUR INTO CHALMERS BUILDING

Under the direction of Ontario Crafts Council Board Member Robert Tetu, Canadian potters are asked to donate a pair of their finest mugs for use and display through the OCC's portion of the Chalmers Building. As part of a Council policy to reduce unnecessary waste, the Great Mug Drive is designed to eliminate the use of disposable cups. By having donors' names registered in the CRC, it also enables users to order their favourites for themselves. Potters interested in participating may receive a registration form by contacting Robert Tetu at RHR5, Seaforth, ON NOK 1W0. Tel: (519) 345-2184.

HOME BASED BUSINESS DIRECTORY

Those interested in being listed in a Home-Based Business Directory being compiled by the Ministry of Regional and Economic Development should contact the Small Business Development Branch at 750 Pacific Boulevard South, Vancouver, BC V8V 9Z9 for the necessary forms for inclusion. SASE must be included.

FREELANCE DESIGNERS WANTED

Exciting and well known New York textile design studio seeks professional designers as freelancers. Silk or paper. Contact: Groot & Misllove Designs, 110 West 40th Street, New York, NY 10018. Tel: (212) 997-1714.

ARTEX

Fine Art services including packaging and crating. Local and long distance. For more information contact The Graphic Edge at (604) 736-6087.

SHOW YOUR STUFF

Select *Homes and Food* magazine would like to profile craftspeople who make objects designed for the home. Send information and slides to Conrad Bierreack, Select Homes, 2300 Yonge Street, Box 790, Postal Station K, Toronto ON M4P 3C4.

Call for entry

Competitions

INTERNATIONAL TAPESTRY NETWORK: EXHIBIT TWO
Contemporary tapestry exhibition organized by ITNET Inc. Open worldwide. Juried by slides of actual pieces or proposed design. Size limitation 15 to 36 square feet or 1.75 to 4 m². Entry fee. **Entry deadline: July 1, 1991.** For more information or application contact: ITNET, Inc., Box 203228,

Anchorage, AK 99520-3228, USA.

KYOTO TEXTILES

Prizes of up to \$20,000 for artistic or industrial textiles judged on creativity and technique. For more information contact: International Textile Fair, c/o Nishijimori-Kaikan, Imadegawa Horikawa, Kemiyoku, Kyoto 602 Japan. Tel: 01081 75 451 0033.

Exhibitions QUILT FOR CANADA PROJECT

Canada Quilts Magazine seeks blocks of all kinds from Canadian quilters to be assembled into one quilt for Canada Day, 1992. Contact: Canada Quilts, Box 39, Station A, Hamilton, ON L8N 3A2. Tel: (416) 549-1055, fax: (416) 523-7440.

TORONTO SCULPTURE GARDEN

The Toronto Sculpture Garden is a non-collecting outdoor exhibition space. Proposals for site-specific sculpture are reviewed quarterly. Contact: Gina Greer, Director, Box 65, Station Q, Toronto, ON M4T 2L7. Tel: (416) 485-9658.

CONTEMPORARY GLASS ARTISTS.

Toronto exhibition space. Submit slides and portfolios to: the Art Zone, Jane or Kathy Irwin, 592 Markham Street, Toronto, ON M6G 2L8. Tel: (416) 534-1892.

SUNDAY ARTISTS SHOW

The Community Arts Council of Vancouver announces its fifth annual juried show for recreational artists. The exhibition will be held at the Community Arts Council Gallery from September 12 to 27, 1991. Lower Mainland recreational artists working in 2 or 3 dimensions are eligible. **Deadline for entry: September 8, 1991.** For details and entry form, send SASE to: Sunday Artists Show, Community Arts Council, 837 Davie Street, Vancouver, BC V6Z 1B7. Tel: (604) 683-4358.

NEW WORKS IN WOOD 1991

An exhibition hosted by the Southern Alberta Woodworkers Society. Open to anyone working with wood resident in Canada. Entries can include wood turnings, musical instruments, sculpture, etc. Juried exhibition. **Deadline for entry: July 2, 1991.** For more information contact: Southern Alberta Woodworkers Society, Box 6753, Station D, Calgary, AB T2P 2E6, or tel: (John Lavoie) (403) 230-7991, (Henry Schlosser) (403) 255-7372.

SALON DES METIERS D'ART DU QUEBEC

Place Bonaventure, Montréal. Juried by 8 to 10 slides and résumé. Fee: \$45. Contact: Michel Jolicoeur, Conseil des Métiers d'Art du Québec, 911 Jean-Talon est #219, Montréal, PQ H2R 1V5. Tel: (514) 270-7770.

6TH ANNUAL EXHIBITION OF MINIATURE ART

Deadline for receipt of artwork: July 22, 1991. For an application form contact: Del Bello Gallery, 363 Queen Street West, Toronto, ON M5V 2A4. Tel: (416) 593-0884, fax: (416) 593-8729.

PAPER MARRIAGE

An exhibition focussing on paper as the object in itself. For more information contact: SNAP, 10137 104 Street, Edmonton, AB T5J 0Z9. Tel: (403) 423-1492.

TOKYO INTERNATIONAL GOOD LIVING SHOW

A large trade event to be held in Japan. The event is in its 14th year and is a specialized exhibition of housing, building materials, and related home products. Last year, the show attracted over 430,000 visitors, mostly average Japanese consumers. Western Canadians can participate in two ways: by promoting their products in the *Canadian Dream* mail-order publication associated with the show, by exhibiting, or both. For more information, call Garret Wasny at (204) 983-0826.

LATITUDE 53 SOCIETY OF ARTISTS

This Edmonton, AB, society invites visual arts and performance proposals. Proposals from curators and individuals encouraged. Send 6-20 slides, video or audio tapes, résumé, artist's statement, and SASE to Latitude 53, 10137 104th Street, Edmonton, AB T5J 0Z9. Tel: 423-5353.

TIME PIECES BY ARTISTS

Call for slides of 3D clocks, watches, etc., from 1" to 15" square. Any medium, 2 month display. \$35 honorarium. Contact: Connie Kirkpatrick, Fine Art Consultant, 1231 Lansdowne Ave. SW, Calgary, AB T2S 1A4.

Fairs

17TH ANNUAL OTTAWA CHRISTMAS CRAFT SALE

Juried show takes place December 21 to 21, 1991, at the Ottawa Civic Centre, Lansdowne Park. For more information contact: Industrial Trade and Consumer Shows, Tom Gamble, 47 Clarence Street, Suite 440, Ottawa, ON K1N 9K1. Tel: (613) 232-5777, fax: (613) 238-4827.

6TH ANNUAL JURIED CHRISTMAS CRAFT SALE

The Community Arts Council of Vancouver announces its sale, to be held in the Community Arts Council Gallery, in November and December of 1991. **The jury deadline will be in September.** For more information contact: Christmas Craft Application Form, Community Arts Council of Vancouver, 837 Davie Street, Vancouver, BC V6Z 1B7.

ART IN THE PARK

A fair held in Bear Creek Park in Surrey, BC, every Sunday from June 2 to September 1, 1991. Fee for the whole summer is \$7 per booth. For more information contact: (604) 596-7461.

ART ON THE WATER'S EDGE

A juried craft show at the Queen's Quay Terminal. **Jury selections will be held on June 20 and July 9, 1991.** Shows available weekends from June 30 to September 2, 1991. For more information contact: Brenda Parres, tel: (416) 363-5017.

Craft Contacts

STEPHEN AVENUE ART ON THE MALL

August 14 to 16, 1991. Summer art and craft show and sale. Send 3 slides of your work and 1 of your booth setup to Nancy Cameron, Calgary Downtown Business Revitalization Zone, 1500 Dome Tower, 333 7th Avenue SW, Calgary AB T2P 2Z2, tel: (403) 266-5300.

EDMONTON FOLK MUSIC FESTIVAL

Arts and Crafts Market, August 9 to 11, 1991. **Deadline: June 28, 1991.** Items must be hand made by individuals participating in the market. Information, application forms: Richard Davis, Assistant to the Producer, Box 4130, Edmonton, AB T6E 4T2. Tel: (403) 429-1899, fax: (403) 424-1132.

JURIED SUMMER CRAFT FAIR

Project by Circle Craft, July 5 to 7, 1991. At Sutcliffe Park, adjacent to Granville Island. 10' x 10' tent corner (4 to each tent) \$335. For more information contact: Paul Yard at (604) 737-9050.

VANCOUVER CRAFT MARKET

Vancouver Craft Market is now accepting applications for 1991 show dates as follows: October 27; November 8, 9, 10; November 22, 23, 24; December 6, 7, 8. For more information contact Simone Avram, 8540 Demorest Drive, Richmond, BC V7A 4M1. Tel: (604) 275-2724.

CRAFTWORLD/CRYDERMAN PRODUCTIONS

CraftWorld/Cryderman Productions Inc. Juried Arts and Crafts Shows, now in 7th successful year is presented in Spring and Fall showcases in six lucrative Ontario markets. The Picking Show - right on Toronto's doorstep- is held in March and October each year. For more information on our Toronto Shows and other CraftWorld events call Brenda Proc at (519) 351-8344, fax (519) 351-8345, or write to CraftWorld, 136 Thames Street, Chatham ON N7L 2Y8.

HANDS IN HARMONY

Invites applications for juried craft shows to be held as follows in 1991.

August 2 to 5: Ice Palace, West Edmonton Mall.

November 7 to 11: Ice Palace, West Edmonton Mall.

November 20 to 24: Recreation Centre, Commonwealth Stadium.

For more information contact: Hands in Harmony, 17219 106th Avenue, Edmonton, AB T5S 1E7. Tel: (403) 486-1670, fax: (403) 486-1521.

12TH ANNUAL MANITOBA CHRISTMAS CRAFT SALE

Takes place November 27 to December 1, 1991, at the Winnipeg Convention Centre, 3rd floor. Juried show. For information or application contact: Karen Bleeks, Western Works, 100-62 Hargrave Street, Winnipeg MN R3C 1N1. Tel: (204) 942-8580 or fax: (204) 956-4200.

THE WEARABLE ART SHOW - VANCOUVER AND CALIFORNIA

The Second Annual Wearable Art Show at the Heritage Hall on December 7 and 8, 1991 will focus on gallery level artisans with unique displays featuring distinctive fibre and jewellery art. Two shows in California: Laguna Beach and Los Angeles, June and September 1991. For further infor-

mation call (604) 732-SHOW/732-7466.

FAMILY CHRISTMAS

The Fifth Annual Family Christmas Show has been expanded to include 40 exhibitors. This juried show will be held November 16 to 17, 1991, in Vancouver. **Applications are now being accepted** for this juried show. Items preferred are handmade items, preferably wearable art and child-related items. For more information contact Deborah at (604) 732-SHOW/732-7466.

ORIGINAL TRADITIONS

In conjunction with the Pacific Film Artisan Village, Original Traditions is holding its Contemporary Fine Craft Exhibition and Sale August 23 to 25, 1991, in Chemainus, Vancouver Island, BC. For further information and an application form contact: Original Traditions, Box 858, Chemainus, BC V0R 1K0, or phone Barb or Ray at (604) 246-9852.

ARTISTS IN ACTION FESTIVAL '91

Terri Heit of Creative Craft Fairs presents a Vancouver Island Christmas art and craft fair, at the Roquet Club, Victoria, BC. Accepting applications for the 11th Annual Christmas Show, November 14 to 17. **Now accepting applications.** Contact Terri Heit, 977 Kentwood Tc. Victoria, BC V8Y 1A5 or tel: (604) 658-2901.

SASKATOON SUNART HANDCRAFT AND BERRY FESTIVAL

Craftspeople are invited to participate in our second annual summer craft festival. Juried show will be held on August 10, 1991 in downtown Saskatoon. For more information and application forms contact: Pat Gittings, Co-ordinator, c/o The Partnership, 115 3rd Avenue South, Saskatoon, SA S7K 1L7. Tel: (306) 668-4598.

PARKE INTERNATIONAL

Craft fairs available in Vancouver, Whistler, West Vancouver, Penticton, Victoria, Burnaby, and Jasper. For more information contact Parke International, 3257 West 36th Avenue, Vancouver, BC V6N 2R6. Tel: (604) 263-2363.

CAMEO'S 12TH CHRISTMAS CRAFT SALE

Western Canada's most successful craft sale has space for 50 new exhibitors. One session only - **December 3 to 8, 1991.** Exhibitor fees include draped booth, electrical outlets, chairs, shopping bags, passes, exhibitor's lounge, program of exhibitors, and \$500 for the best designed booth and best craftsmanship. For more information contact: Cameo's Craft Sales, 645 First Edmonton Place, 10665 Jasper Avenue, Edmonton, AB T5J 3S9.

ONE OF A KIND

The Canadian Craft Show is now **accepting applications** for the 1991 Christmas One of a Kind Craft Show and Sale, November 28 to December 8, 1991, Exhibition Place, Toronto, ON. For more information contact: Canadian Craft Show, 21 Grenville Street, Toronto, ON M4Y 1A1. Tel: (416) 960-3680, fax: (416) 923-5624.

1991 CHRISTMAS CRAFT MARKET

Juried exhibition to be held at Whalley Junior Secondary,

13105 104th Avenue, Surrey, on November 23 and 24, 1991. **Deadline for entry: August 31.** Registration forms are available from Surrey Arts Centre, 13750 88 Avenue, Surrey, BC V3W 3L1. Tel: (604) 596-7461.

PACIFIC NATIONAL EXHIBITION CREATIVE CRAFTS SHOW

Opportunities for all craft media. Lightly juried. Show takes place August 16 to September 2 in the BC Pavilion. For more information contact Margaret Hyslop at (604) 253-2311.

DELTA SHOPPERS MALL

Summer Fair: July 29 to August 4; Fall Craft Fair: November 12 to 17. Fee: \$30, includes tables, skirting, chairs and power. Signage must be professional. For information and bookings contact Verna at (604) 590-2757.

FIFTH ANNUAL EASTSHORE SUMMER CRAFT FAIRE

Applications still available for an outdoor fair August 3 to 4 in Boswell, BC on scenic Kootenay Lake. For more information and an application contact: Fran Kindler, Box 42, Boswell, BC V0B 1A0. Tel: (604) 223-8492.

Galleries/Shops

LEE CREEK GALLERY

Opening May 18, 1991. RR1, S-9, C-1, Chase BC. Tel: (604) 679-8680.

FRONT STREET GALLERY

Gallery in the sunny resort community of Penticton is looking for unique, distinctive work. Contact: Front Street Gallery, 75 Front Street, Penticton, BC V2A 1H2, or call Brad or Karen at (604) 493-2468.

JUMP FOR JOY

Handknits. A retail outlet for handknits of natural and/or unique synthetic yarns. Contact: Sandy McLeod, Basement, 10313 Whyte Avenue, Edmonton, AB T6E 2X6. Tel: (403) 433-2811.

NICOL STREET GALLERY

A new gallery opening in Nanaimo, BC, is seeking high quality handmade works for consignment. Send photos, slides, or brochures of work including background information for jurying. For more information contact: Nicol Street Gallery, c/o Linda and Raymond de Beeld, 42 Nicol Street, Nanaimo, BC V9R 4S8. Tel: (604) 753-4165.

THE HAND LOOM GALLERY

Operating in downtown Victoria, BC, for 25 years is seeking finely crafted original work in all media. The gallery specializes in all forms of pottery, glass, wood, paper, and jewellery. Exhibitions are also available. Contact: Gallery Manager, Hilary Sager, 641 Fort Street, Victoria, BC V8W 1G1. Tel: (604) 384-1011.

AIRPORT RETAIL OUTLET

The OCC has opened a new retail outlet at Pearson International Airport Terminal 3. Looking primarily for production people. Interested individuals should contact Jim Wiles, Craft

Information Officer, Ontario Crafts Council, 35 McCaul Street, Toronto, ON M5T 1V7. Tel: (416) 977-3551.

ANGUS MURRAY GIFTS AND BOOKS

On the lookout for well designed, original, crafted items. Currently carries Native art, pottery, jewellery, basketry, etc. For more information contact: Joan Rivard, Angus Murray Gifts and Books, 163 Stafford Street, Winnipeg, MN R3M 2W9. Tel: (204)-452-2201.

ACC GALLERY AND CRAFT SHOP

The Alberta Crafts Council is pleased to announce the opening of Alberta Crafts Council Presents... Gallery and Craft Shop. To sell your work in the shop you must be a member of the ACC. Membership is open to anyone at a cost of \$40 for individuals. We are looking for works that display the highest degree of creativity, originality, and craftsmanship in clay, glass, fibre, metal, paper, and wood media. Please send portfolio of slides and/or photographs, resumé to Alberta Crafts Council, 509 10136 100 Street, Edmonton, AB T5J 0P1. For more information contact John Goedhart or Sheralee Hancherow at (403) 425-0909.

HANDSPIRITS

Cooperative gallery seeks finely crafted original work. The shop features work in fibre, wood, glass, ceramics, and paper. Resumé requested. Contact: Handspirits, 1410 4th Street SW, Calgary, AB T2R 0Y2. Tel: 263-HAND.

SOJOURN GALLERY OF FINE CANADIAN HANDICRAFTS

If interested in exhibiting, contact: Denise Hansen, Sojourn Gallery, 112-513 8th Avenue SW, Calgary, AB T2P 1G3.

BRIDGEPOINT MARKET

BridgePoint market is always interested in talented crafts people to sell their home made product in the market. Prices for a day table are Tue.-Fri. \$10 per table per day, Sat./Sun. and holiday Mondays are \$25 per table per day. Please contact the Administration Office for more information at (604) 273-8500.

LONSDALE QUAY MARKET

Day tables are available for craftspeople. All items must be handmade by the applicant. For more information contact: Lonsdale Quay Market, 123 Carrie Cates Court, North Vancouver, BC V7M 3K7. Tel: (604) 985-2191.

GIFT GALLERY

Campbell River, Vancouver Island seeks handcrafted Canadian products. Contact: Raelene Johnston, Innovations Gift Gallery, 870 E. 13th Ave., Campbell River, BC, V9W 4H2.

GRAND FORKS ART GALLERY

The Grand Forks Art Gallery seeks submissions of fine crafts. Contact: Faith Welsh, Gallery Manager, Grand Forks Art Gallery, Box 2140, Grand Forks BC, V0H 1H0. Tel: (604) 442-2211.

ISLAND MOUNTAIN GALLERY

Invites artists working in any media to submit exhibition proposals. **Deadline: August 1, 1991.** Exhibits hang on 12 foot high walls. Include resumé or CV, 10-20 slides of current

Craft Contacts

work, artists statement, and a time frame. Island Mountain Arts, Box 65, Wells, BC V0K 2R0. Tel: (604) 994-3466.

THE CRAFT GALLERY

Invites proposals, with slides and resumé. Alan Elder, Curator, The Craft Gallery, Ontario Crafts Council, 35 McCaul St., Toronto, ON, M5T 1V7. Tel: (416) 977-3511.

CANADIAN CLAY AND GLASS GALLERY

Preparing archives and planning exhibitions for 1991. Contact Racel Gotlieb, Box 334, Waterloo, ON N2J 4A4.

INTERNATIONAL GALLERY OF SAN DIEGO

Seeks slides of contemporary crafts for exhibit and sale. Contact Stephen Ross, International Gallery, 643 G St., San Diego, CA 92101, USA. Tel: (619) 235-8255.

Education

WEAVING CERTIFICATE PROGRAM

The Handweavers, Spinners, and Dyers of Alberta is pleased to announce a new Weaving Certificate Program. Open to all interested individuals. For more information contact: Mary Bieg, 51012 Range Road, 210 Sherwood Park, AB T8G 1E6. Tel: (403) 662-3826.

VANCOUVER COMMUNITY COLLEGE

Now accepting applications for the two year program in Jewellery Art and Design. **Courses begin September 1, 1991.** Contact: Vancouver Community College - City Centre, 250 West Pender Street, Vancouver, BC, or call (604) 681-8111 local 220 for further information. Courses also available for the Fundraising Management National Certificate. Call 875-8200 for more details.

ATLIN CENTRE FOR THE ARTS

Course information now available. Contact ACA, 19 Elm Grove Avenue, Toronto, ON M6K 2H9.

KAWASHIMA TEXTILE SCHOOL, KYOTO, JAPAN

The Kawashima Textile School offers a comprehensive curriculum in introductory, advanced, and independent study courses and will tailor courses to match the individual interests and needs of overseas students. For further information contact: Takeshi Kinoshita, Kawashima Textile School, 148 Ichihara, Shizuichi, Sakyo-ku, Kyoto, Japan. Tel: 075-741-1351, fax: 075-741-2107.

GOLDSMITHS' COLLEGE, UNIVERSITY OF LONDON, ENGLAND

For those tapestry artists interested in pursuing study at the university level in tapestry and related textile arts, there is a new post-graduate Master of Arts program at Goldsmiths' College at the University of London. The program combines studio practice equally with critical theory. For more information contact: Janis Jefferies, Lecturer in Textiles, Department of Visual Arts, Goldsmiths' College, University of London, New Cross, London, SE14 6NW, UK.

ISLAND MOUNTAIN ARTS

Calendars now available. Contact: Island Mountain Arts, Box

65, Wells, BC. Tel: (604) 994-3466, fax: (604) 944-3405. The CABC also has several copies available. Get 'em while they're hot!

Lectures

STAINED GLASS DESIGN SEMINAR

August 19 to 24, 1991. Visual Arts Centre, 350 Victoria Drive, Montréal, PQ. Feature German Master Jochem Poensgen. Concurrently, a stained glass painting seminar will be given by Jean-Dominique Fleury and Sylvie Gaudin of France. Fee: \$500 each, both sessions sponsored by Artists in Stained Glass. For more information contact: David Wilde, RR2, Holstein, ON N0G 2A0. Tel: (519) 394-3119.

ALONG THE SILK ROAD: A TEXTILES STUDY DAY

June 25, 1991. A lecture, demonstrations, discussions, and examinations of various silk textiles from China, Japan, India, and South-east Asia. Cost is \$85 (includes lunch). Course number: LB2012. Museum of Anthropology, UBC. Registration with VISA or MC: 222-5222 or 222-5223. For more information contact Rachelle at 222-5273.

WOMEN IN ART HISTORY

An evening lecture course exploring sexual differences as perceived through the practice of art history. Instructor: Carol Williams. For more information contact: Part-Time Studies, Emily Carr College of Art and Design, 1399 Johnston Street, Vancouver, BC V6H 3R9. Tel: (604) 844-3810, 687-2345, fax: (604) 844-3801.

Workshops

INCOME TAX FOR VISUAL ARTISTS

June 9, 1991. Workshop led by Gary Maier. Fee: \$10 per person, registration required before June 2, 1991. Surrey Art Gallery, 13750 88th Avenue, Surrey, BC V3W 3L1. Tel: (604) 596-7461.

WASHINGTON CLAY PROGRAMS

Throwing and handbuilding with Patrick McCormick. Beginning through advanced. Campus housing available. Contact: Patrick McCormick, Western Washington University, Art Department, High Street, Bellingham WA 98225. Tel: (206) 676-3360.

METCHOSIN INTERNATIONAL SUMMER SCHOOL OF THE ARTS

Ceramics: Glaze and Colour Development: **June 23 to July 6, 1991.** With Robin Hopper. Raku: **June 29 and 30.** With Gordon Hutchens. Contact: Metchosin International Summer School of the Arts, 911A Linden Avenue, Victoria, V6H 3R9. Tel: (604) 384-1698.

PALETTES PLUS 3

Features workshops in watercolour, oil, collage, ink, mixed media, papermaking, and screen printing with Judi Betts, Al Brouillette, and more on Whidbey Island, WA. **June through August.** Coupeville Arts Center, Box 1711, Coupeville WA 98239. Tel: (206) 678-3396.

1991 NATIONAL SURFACE DESIGN CONFERENCE

Two-day workshops available, **July 10 to 11, 1991, 9AM to 4PM**, include:

Shibori - Japanese bound resist technique. Silk and cotton dyeing techniques.

Production screen printing on fabric. Learn a method to screen-print short fabric yardage without the laborious hit-and-miss problems of printing with single repeat screens.

Construction of Japanese containers. A workshop detailing various approaches to wrapping and box making.

For more information contact the 1991 National Surface Design Conference, Conference Registration, UW Extension, GH-22, Seattle, WA 98195.

PHOTO FOCUS V

On Whidbey Island features workshops with Ruth Bernhard, Bruce Barmbaum, Pat O'Hara, Jay Dusard, Marsha Burns, Linda Connor, Martha Casanave, Cherie Hiser and David Hiser, and more, **April 5 through June 16**. Coupeville Arts Center, Box 1711, Coupeville WA 98239. Tel: (206) 678-3396.

USE OF THE LATHE: IDEAS FOR THE CLASSROOM

Annual symposium to address the topics of techniques, approaches, and creativity in using the lathe within the educational system. **June 21 to 23, 1991**. Hosted by the Overlake School, Redmond, WA. For more information contact: The Wood Turning Center, Box 25706, Philadelphia, PA 19144.

NEAT THINGS - STUDIO GALLERY OF HANDMADE JEWELLERY

Wide variety of classes offered each month. Contact: 1765 Marine Drive, West Vancouver, BC V7V 1J5, tel: (604) 926-9512. Open Tuesday to Saturday 10AM to 5PM.

FIBER FORUM V

September 16 to 22. Three day weaving, basketry, spinning, and dyeing workshops on Whidbey Island, Washington, with Mabel Ross, Peter Collingwood, and more. Navajo weaving workshop August 3 to 7. For a free brochure contact: The Coupeville Arts Center, Box 171-1, Coupeville, WA 98239. Tel: (206) 678-3396.

EMILY CARR COLLEGE OF ART AND DESIGN

Ceramic Sculpture. **July 2 to 19, 1991.** Instructor Anne Perrigo. Decorative Earthenware Throwing. **July 22 to August 9, 1991.** Instructor Dale Pereira. For more information contact Part-Time Studies, ECCAD, 1399 Johnston Street, Granville Island, Vancouver, BC V6H 3R9. Tel: (604) 687-2345, fax (604) 844-3801.

ANDRIGHETTI GLASSWORKS

For upcoming workshop information call (604) 731-8652.

HOLLYHOCK FARM

July 22 to 27. Basket weaving with Cynthia Minden. Learn traditional methods and create a vessel of your own design. \$595.

July 29 to August 3. Make a Frame Drum with Kristen Scholfield-Sweet. Prepare and stretch hides over ash and

oak hoops. Decorate with earth pigments \$595

August 5 to 10. Drawing/painting with Nora Blanck. For the beginner or accomplished artist. Price includes materials and use of a fully equipped studio. \$695.

August 19 to 24. Papermaking with Dorothy Field. Use local fibres and study Japanese and Nepali methods. \$595.

September 22 to 28. Fire by the Sea with clay artist Paul Soldner. Construct kilns on the beach. Raku and low fire salt firing are the focus. Bring bisqued work. \$615.

For more information on other workshops or registration contact: Hollyhock Farm, Box 127, Manson's Landing, Cortes Island, BC V0P 1K0. Tel: (604) 935-6465.

Conferences

QUILT EXPO EUROPA III

To be held in the Netherlands Conference Centre, The Hague, Holland. For more information write to: Tulip Tour/QEEII, 54-14520 Memorial Drive, Houston, TX 77079.

BASKETRY FOCUS '91

October 4 to 6, 1991. The third biennial basketry conference to be held at Harbourfront, Toronto, Ontario. International line-up of traditional and contemporary lecturers and workshop leaders. Sponsored by the Basketry Network and the Studios at Harbourfront. For more information contact: Melinda Mayhall, 16 Moore Avenue, Toronto, ON M4T 1V3. Tel: (416) 484-8406.

JEWELLERY SYMPOSIUM IN FINLAND

The International Jewellery Symposium takes place in Ruotsinpyytaa **July 22 to 28, 1991**. For more information contact: Dunocon, Box 149, Taos, NM 87571 USA.

A PATCH IN TIME

August 30 to September 2, 1991. International Quilters' Conference, The Banff Centre. For more information contact: Bonnie Murdoch, 3rd floor, 930-13 Avenue SW, Calgary, AB T2R 0L4. Tel: (403) 245-4944.

NEW FIBRE ART, CRAFTS AND THE ENVIRONMENT CONFERENCE

July 1 to 7, 1991. Ness Gardens, University of Liverpool, England. Various conferences and workshops available. Contact: Projects Environment, 11, Higher Downs, Atrincham, Cheshire WA14 2QL, tel: 061 928 1966, or contact the CABO for more details.

THIRD INTERNATIONAL CONFERENCE ON ENVIRONMENTAL GLASS

The conference is jointly organized by Artists in Stained Glass of Canada and Environmental Glass Associates of Oklahoma. Montreal, **August 14-19, 1991**. For more information contact: Artists in Stained Glass, Chalmers Building, 35 McCaul Street, Suite 220, Toronto, ON M5T 1V7.

CAPE BRETON SCHOOL OF CRAFTS

October 18-22, 1991. A weavers conference consisting of seminars, exhibitions, a fashion show, suppliers, and a ceilidh. For further information contact: The Cape Breton

Craft Contacts

School of Crafts, Box 1686, 225 George Street, Sydney, NS B1P 6T7. Tel: (902) 539-7491.

CANADIAN EMBROIDERER'S GUILD 17TH ANNUAL TWO WEEK SUMMER WORKSHOP

June 10 to 21, 1991. Instructors include Margaret Hall from the UK and Anne Roberts of Toronto. Brexia College, University of Western Ontario, London, ON. For more information contact: Margaret L. Hersey, Box 541, Station B, London, ON N6A 4W8.

SURFACE DESIGN CONFERENCE

University of Washington, Seattle, USA, **July 11-14, 1991.** Focus will be on the American/Japanese crosscurrents of inspiration, influence, and cultural exchange in surface design. For more information contact: Diana Nielsen, University of Washington, Seattle, WA 98195, or tel: (206) 543-0888 ext GH-22.

ARTS: INDUSTRY INTERFACE - SIXTH NATIONAL CERAMIC CONFERENCE

Australia, Queensland, Broadway, **July 1 to 5, 1991.** Includes seminars, panel discussions, workshops, and gallery tours. Location: Griffith University. Fees range from \$165 US to \$251 US. For further information contact the National Ceramics Conference, Box 231, Broadway, Queensland 4006, Australia, or telephone (07) 358-5121, or Phil Greville, Conference Manager (07) 553-4419.

Funding

BRUCEBO FINE ARTS SCHOLARSHIPS

Awarded to a promising Canadian artist to spend two months (summer) at the Brucebo studio near Visby, on the island of Gotland, Sweden. Approximate value \$2500. Contact: Secretary, Canadian Scandinavian Foundation, c/o McGill University, 805 Rue Sherbrooke Ouest, Montréal, PQ H3A 2K6. Tel: (514) 392-4718.

ROYAL BANK AWARD

\$10,000 annual award to outstanding Canadians. Selection Committee, Royal Bank Award, Box 1102, 3rd floor, Place Ville Marie, Montréal, PQ H3C 2X9. Tel: (514) 874-8549.

1991 COMMONWEALTH FOUNDATION ARTS AND CRAFTS SCHOLARSHIPS

Open to anyone under 35 living in any of the Commonwealth countries. Ten fellowships available. Each fellowship is worth up to £6000 and covers the costs of airfare, accommodation and subsistence, as well as the expenses of mounting and exhibition in the host country. It enables artists to work and study in the Commonwealth country of their choice for nine months. For more information contact: Commonwealth Institute, Kensington High Street, London W8 6NQ, England. Telephone 071-603 4535.

UPCOMING CANADA COUNCIL DEADLINES

Jean A. Chalmers Fund for the Crafts: Up to \$50,000 annually for special projects, research projects, and special workshops. **Mar. 1 and Sept 1.** Don Sigurdson, Visual Arts Section, (613) 598-4348. Art Bank Purchase: Jury members

meet twice a year to determine works of art which will be purchased. For more information, contact: Canada Council Art Bank, 2279 Gladwin Crescent, Ottawa, ON K1B 4K9. Tel: (613) 598-4359. For further information on Canada Council funding write to: The Canada Council, 99 Metcalfe St, Box 1047, Ottawa, ON K1P 5V8. Tel: (613) 598-4365 or -4366. Collect phone calls accepted.

GOEBEL CANADA

Annual international porcelain sculpture awards totalling \$25,000. Contact: Marcel Brandstat, President, Goebel Canada, 120 Carnforth Road, Toronto, ON M4A 2K7.

FOREIGN SCHOLARSHIPS

For information on scholarships and fellowships to Canadians by other countries contact: Association of Universities and Colleges of Canada, Scholarship Administration Services, 151 Slater St., Ottawa, ON K1P 5N1. Tel: (613) 563-1236.

THE ELIZABETH GREENSHIELDS FOUNDATION

Supports art students seeking training in traditional means of artistic expressions, and young artists who have demonstrated technical competence in traditional means of artistic expression. Awards are for \$8,000. Applications are accepted throughout the year. Contact: The Elizabeth Green-shields Foundation, 1814 Sherbrooke St. West., Montreal, PQ H9H 1E4.

HENRY MOORE FOUNDATION

Residential fellowships to students under age 35 who have completed post-grad course in sculpture or have equivalent experience. Contact: Camberwell School of Arts & Crafts, Peckham Rd., London SE5 8UF, England. Tel: (01) 730-0987.

CANADIAN/IRISH EXCHANGE

Enables artists under 31 to travel in Ireland and work up to six months at a time at Tyrone Guthrie Centre, Annamakerri, County Monaghan. Contact: Thom Barnes, Colony Coordinator, Leighton Artist Colony, PO Box 1020, Banff, AB T0L 0C0. Tel: (403) 762-6370.

Exhibitions

Regional

OPENING SHOW

To June 30, 1991. Featuring Artists Penny Bimbaum, Karen Chapnick, Christina Clarke, Walter Dexter, and others. Genesis Gallery, 1456-A Johnston Road, White Rock, BC V4B 3Z5. Tel: (604) 535-9819.

CUSTOMS AND COSTUMES: THE ETHNIC DIVERSITY OF CHINA

June 7 to September 29, 1991. Costumes and jewellery from 40 Chinese ethnic groups. Candian Craft Museum, 1411 Cartwright Street, Granville Island, Vancouver, BC V6H 3R7. Tel: (604) 687-8266.

SILENT AUCTION

June 7 (bidding starts) to 26 (bidding closes), 1991.

Pieces by Joanne Andrighetti, Ted Jolda, Liese Chapman, and others. Imagination Market, 528 Powell Street, Vancouver, BC V6A 1G9. Tel: (604) 253-4033.

LIGHT ON PAPER

May 3 to June 16, 1991. An exhibition of photo-emulsion prints on handmade paper mounted in handmade frames, by Brenda Harnsing and David Mackenzie. Paper-Ya Gallery, 9 & 10 Johnston Street, Granville Island, Vancouver, BC. Tel: (604) 684-2531.

EXHIBIT OF NEEDLE ART

October 20 to 21, 1991. The Canyon House, 3590 Capilano Road, North Vancouver, BC. Tel: (604) 987-7813.

FABRIC EXPLOSION: AN EXHIBITION

May 16 to June 20, 1991. Presented by the Vancouver Guild of Fabric Arts. North Vancouver City Hall, 141 West 14th Avenue, North Vancouver, BC. For more information call (604) 224-1910.

LINES AND MARKS ON PAPER EXHIBIT

June 3 to 22, 1991. By artists Marianne Jansma and Rick Olson. Rollin Art Centre, 3061 8th Avenue, Port Alberni, BC V9Y 2K5. Tel: (604) 724-3412.

GLASS AND ALUMINUM SCULPTURE

June 4 to July 3, 1991. New glass and aluminum sculpture by Lou Lynn. Grand Forks Art Gallery, Box 2140, 7340 5th Street, Grand Forks, BC V0H 1H0. Tel: (604) 442-2211.

National

THE MEDIUM IS METAL - THE FOCUS IS RESOURCES

August 1 to 31, 1991. Artists were encouraged to make a statement of our resources for the past, present, or future. Alberta Crafts Council, 509 McLeod Building, 10136 100th Street, Edmonton, AB T5J 0P1. Tel: (403) 428-1654.

FIBRE FIREWORKS '91

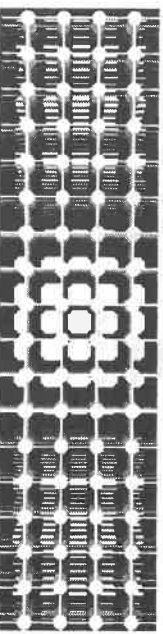
May 25 to July 7, 1991. Canadian Embroiderer's Guild 20th Anniversary exhibition at the London Regional Art and Historical Museums, 421 Ridout Street North, London, ON N6A 5H4.

THE TURNING POINT: THE DEICHMANN POTTERY 1935-1963.

To February 1992. 80 pieces from the permanent collection representing the New Brunswick pottery of Kjeld and Erica Deichmann. Canadian Museum of Civilization, Arts and Traditions Hall, 100 Laurier Street, Hull, P.Q. Tel: (819) 776-8318.

RETROSPECTIVE EXHIBITION

to June 16, 1991. Work by Edouard Jasmin. Musée d'Art de Saint-Laurent, 615 Boulevard Sainte-Croix, Saint Laurent, P.Q.



International

FROM THE WOODS

May 25 to August 18, 1991. Whatcom Museum, 121 Prospect Street, Bellingham, WA 98225. Tel: (206) 676-6981.

EXPLORATIONS II: THE NEW FURNITURE

May 9 to August 4, 1991. American Craft Museum, 40 West 43rd Street, New York, NY 10019. Tel: (212) 956-6047.

Fairs

PORT MOODY ARTS ASSOCIATION ART SHOW AND SALE

June 29 to July 1, 1991. In conjunction with the Golden Spike Days Celebration. For more information contact Judy Shield at (604) 588-1229.

ARTCRAFT '91

June 7 to September 2, 1991. The Gulf Islands Community Arts Council's 24th Annual Arts and Crafts Sale. For more information contact: Elaine Potter, Artcraft, Box 682, Ganges, BC V0S 1E0. Tel: (604) 537-5951.

FIRST ANNUAL CIRCLE CRAFT SUMMER CRAFT FAIR

July 5 to 7, 1991. Over 60 artisans are expected to participate. Sutcliffe Park, Granville Island, Vancouver, BC. For more information contact: Paul Yard, 101 1765 West 8th Avenue, Vancouver, BC. Tel: (604) 737-9050, fax: 736-2186.

BUMBERSHOOT

Also known as the Seattle Arts Festival, celebrates its twenty fifth anniversary with an international line up of music, art and performance. Takes place in the Seattle Centre, August 30 to September 2, 1991. Advance tickets go on sale August 14, at all Western Washington Pay'n Save locations. For further information call (206) 622-5123.

PRESERVING THE HERITAGE: QUILTS IN TRANSITION
September 20 to 22, 1991. The third quilt show and sale in Parksville Community Hall, Parksville, Vancouver Island, BC.

Notices

CHILDREN'S ART REQUIRED

The University of Victoria requires children's artwork to aid art education students in their studies of child art education. Collections of work saved by adults from their childhood are especially of interest. Contact: Children's Art Collection, c/o Bill Zuk, Arts and Education Department, Faculty of Education, Box 3010, Victoria, BC V8W 3N4.

THINK BIG! - THIS KILN CAN DO IT

A large kiln is now available on Granville Island to anyone wanting to fire large work. The stacking space is approximately 5' x 5' x 5.5'. The burners are state of the art so the kiln can be fired slowly over a period of days. These conditions apply: Firing to a maximum of Cone 4. No Glazing on site. Big work only. Load the work yourself. Firing to be done by our

Craft Contacts

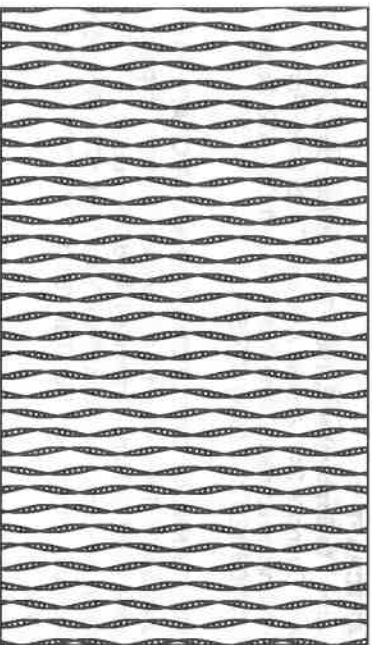
Studio person. Cost: gas only. Deposit required. For more information contact: John Pickering, 1359 Catwright Street, Vancouver, BC. Tel: (604) 684-8452.

HOME FOR SALE

With fabulous professional pottery studio. Gracious basement style. 4 bedrooms. 2600 sq. ft. in total. Valley View in Cloverdale, BC. Call Edith Katronis or Linda Maynes, Benchmark Homelife Realty, 574-0161. \$192,900.00.

DESIGN VANCOUVER

Design Vancouver is currently seeking members from the business community to join its board, in particular, representatives from the areas of business, manufacturing, health, leisure, consumer, education, environment, and communication. We encourage those who are interested to participate. For further information contact: Michele Guest at (604) 731-7170.



Editor: Jennifer Rogers
Staff: Paul Lesack, Michelle Weeks,
Nicole MacKenzie
Production and layout: Paul Lesack
Memberships: Linda Mitchell and
Dick Hamilton

Mailing: Nicole MacKenzie, Irene
Corn
Deadline for July/August issue:
June 15, 1991

Ads must be camera ready and cost
be as follows: 1/8 page \$20, 1/4 page
\$40, 1/2 page \$80, whole page \$160.
Classified ads are 15 cents per word

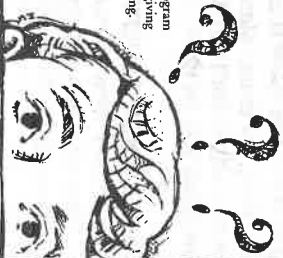
How to be a Local Hero

Ask. When you want to make your community a better place, but don't know where to start, ask your friends. Chances are, many of them are already Local Heroes, giving their time and money to causes that you can help too. Be a Local Hero.



A new spirit of giving

A national program
to encourage giving
and volunteering.



PLEASE GIVE FROM YOUR HEART

Please give generously when your Heart Fund volunteer calls on your home. Your donation could help save the life of someone dear to your heart.

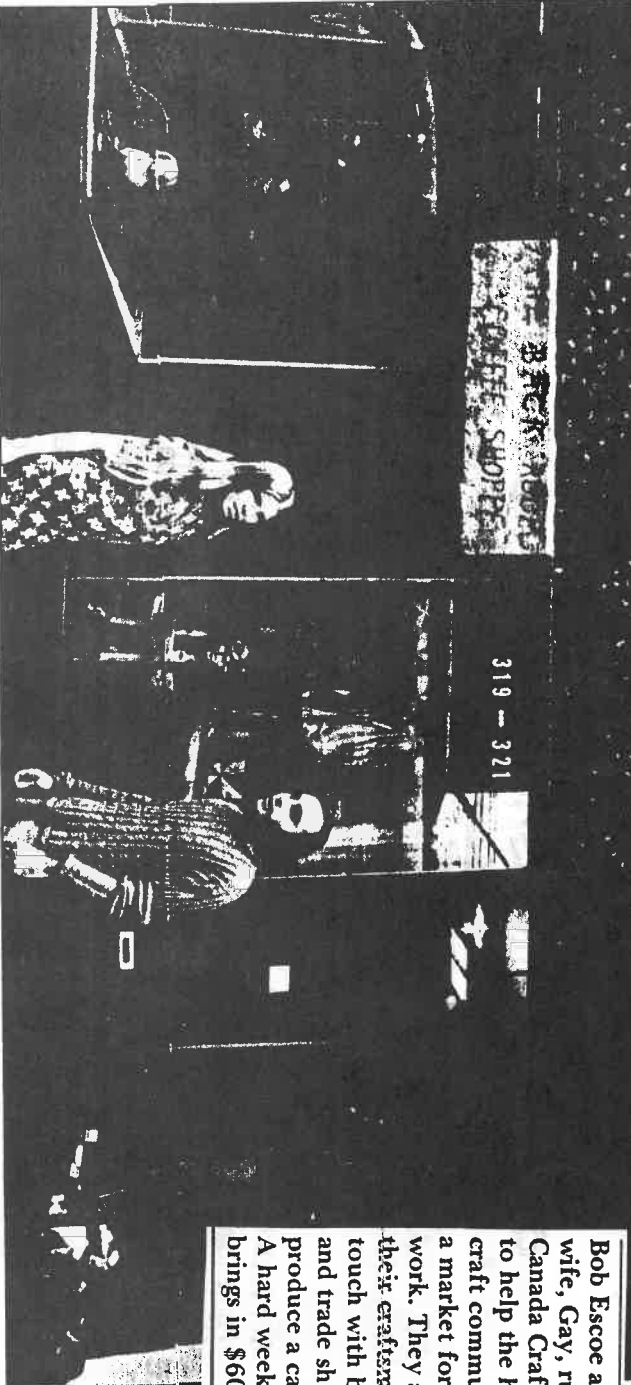
To make your donation by phone, call 736-4404 (in Greater Vancouver) or toll-free: 1-800-663-2010 (from outside Vancouver).



HEART
AND STROKE
FOUNDATION

IMPROVING
YOUR ODDS
AGAINST
CANADA'S
#1 KILLER.

CANADA CRAFT HOUSE



Bob Escoc and his wife, Gay, run the Canada Craft House to help the hippy craft community find a market for their work. They also put their craftsmen in touch with boutiques and trade shows and produce a catalogue. A hard week's work brings in \$60.

1971

1991

NEXT MONTH: 20 YEARS OF CHANGE

C.A.B.C. MEMBERSHIP APPLICATION FORM

TYPE OF MEMBERSHIP REQUIRED (please indicate ☒)

☐ **REGULAR RENEWAL** ☐
individuals, societies or groups. Members will receive
monthly newsletters and have full voting privileges.
\$37.00

☐ **AFFILIATE**

registered organizations wishing to be closely associated
with the CABC. Special form required. \$42.00

☐ **STUDENT** ☐
for registered full-time students. \$70.00

☐ **FAMILY** \$42.00

☐ **SUSTAINING**
individual, group or corporate body subscribing to the
goals of the CABC through financial support or other
appropriate means. \$100.00

Name _____ Craft _____

Address _____ Postal Code _____

Telephone _____ Amount Enclosed \$ _____

PLEASE COMPLETE AND MAIL WITH YOUR CHEQUE TO CRAFTS ASSOCIATION OF B.C.
1386 Carwright Street, Granville Island, Vancouver, B.C. V6H 3R8